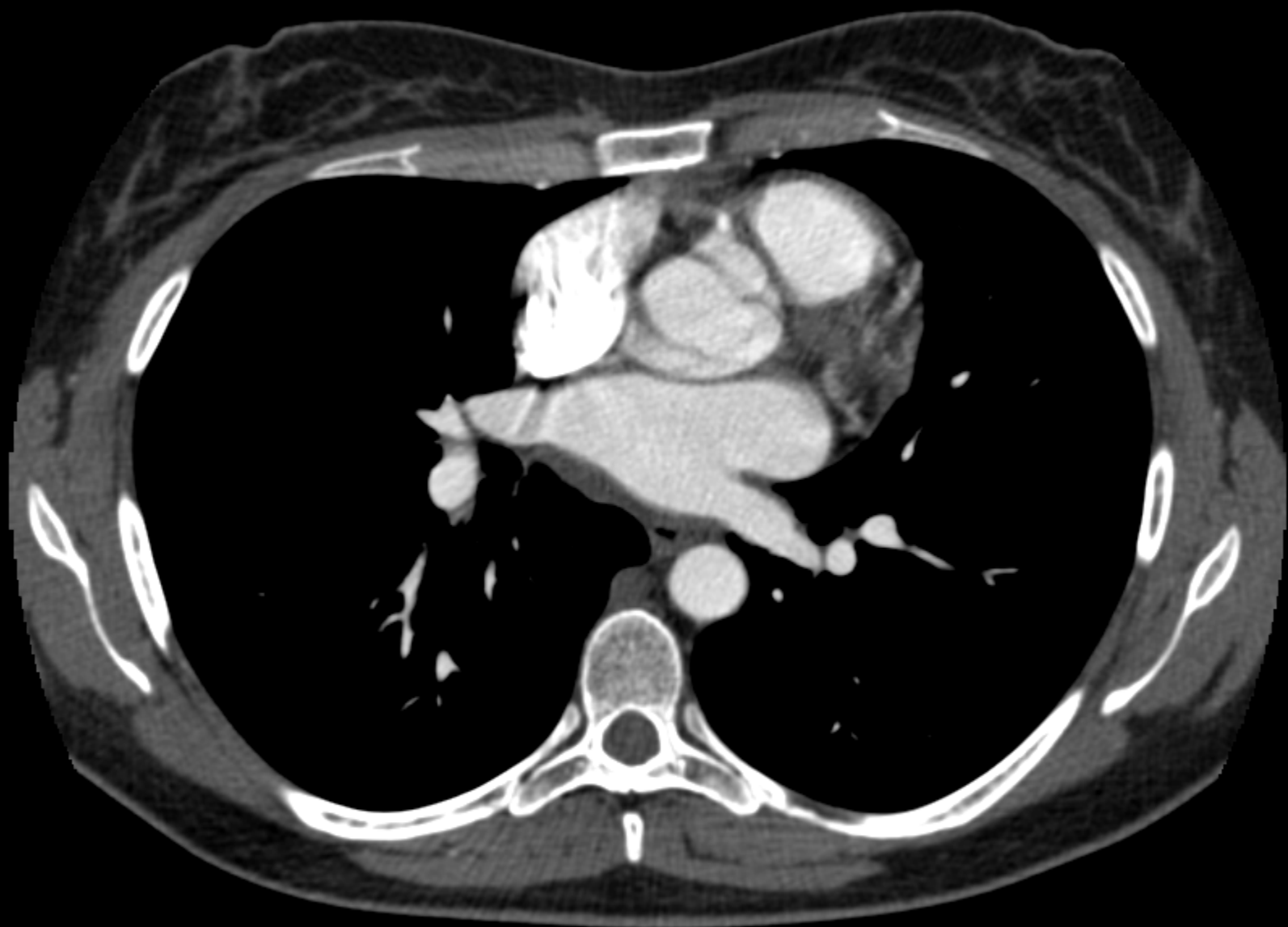


MP is a 39 yo female mother of four presents with abdominal distention, fatigue, and weight loss. Found to have a large posterior mediastinal/retroperitoneal thoracoabdominal mass. Biopsy revealed a myxoid sarcoma.



























[H]

IVC



[F]



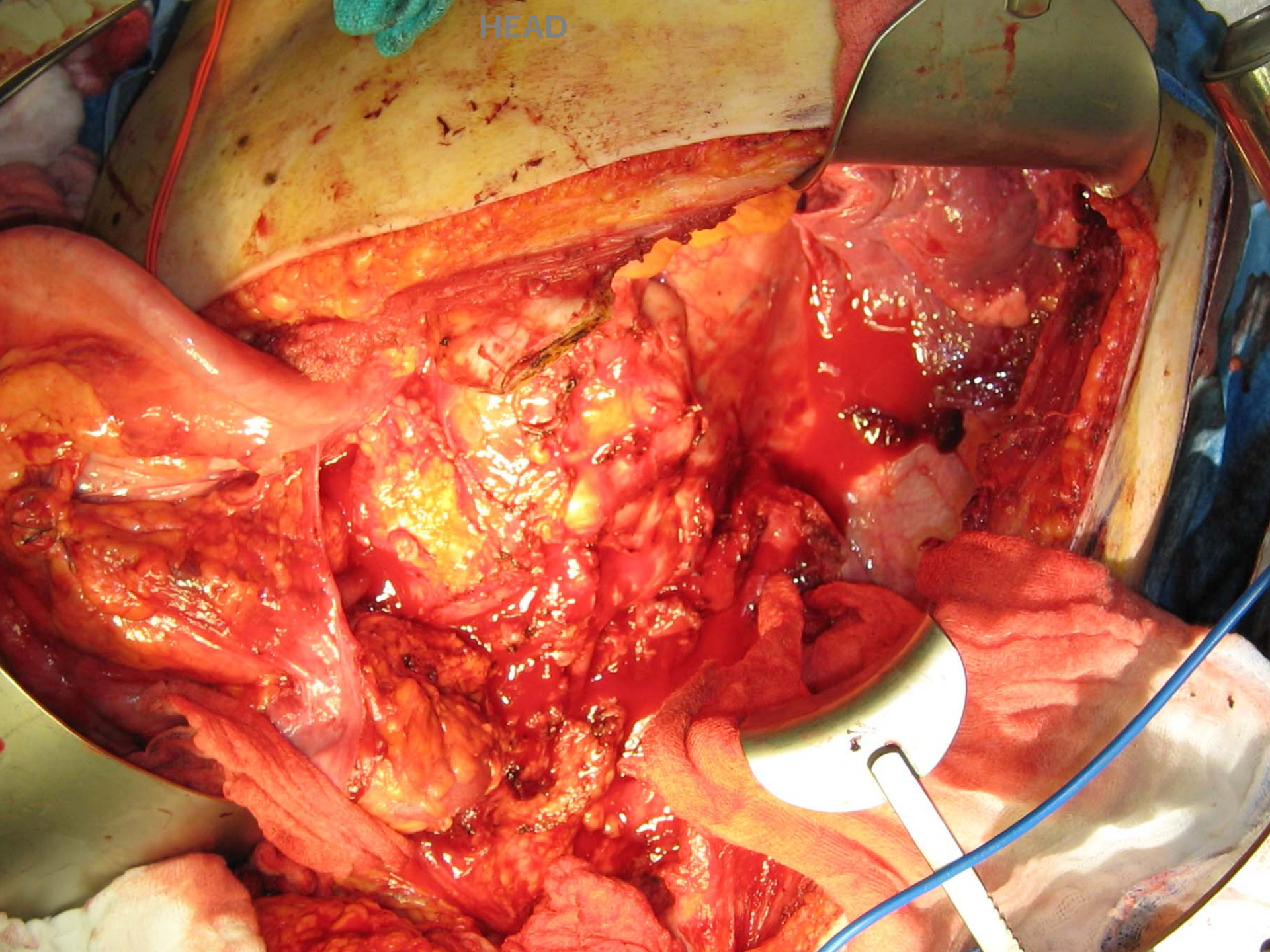
What operation would you perform, if any?



Radical resection of thoracoabdominal sarcoma/aortic reconstruction with reimplantation of L renal artery, Aorto-SMA bypass, Aorto-hepatic bypass, Splenectomy



HEAD



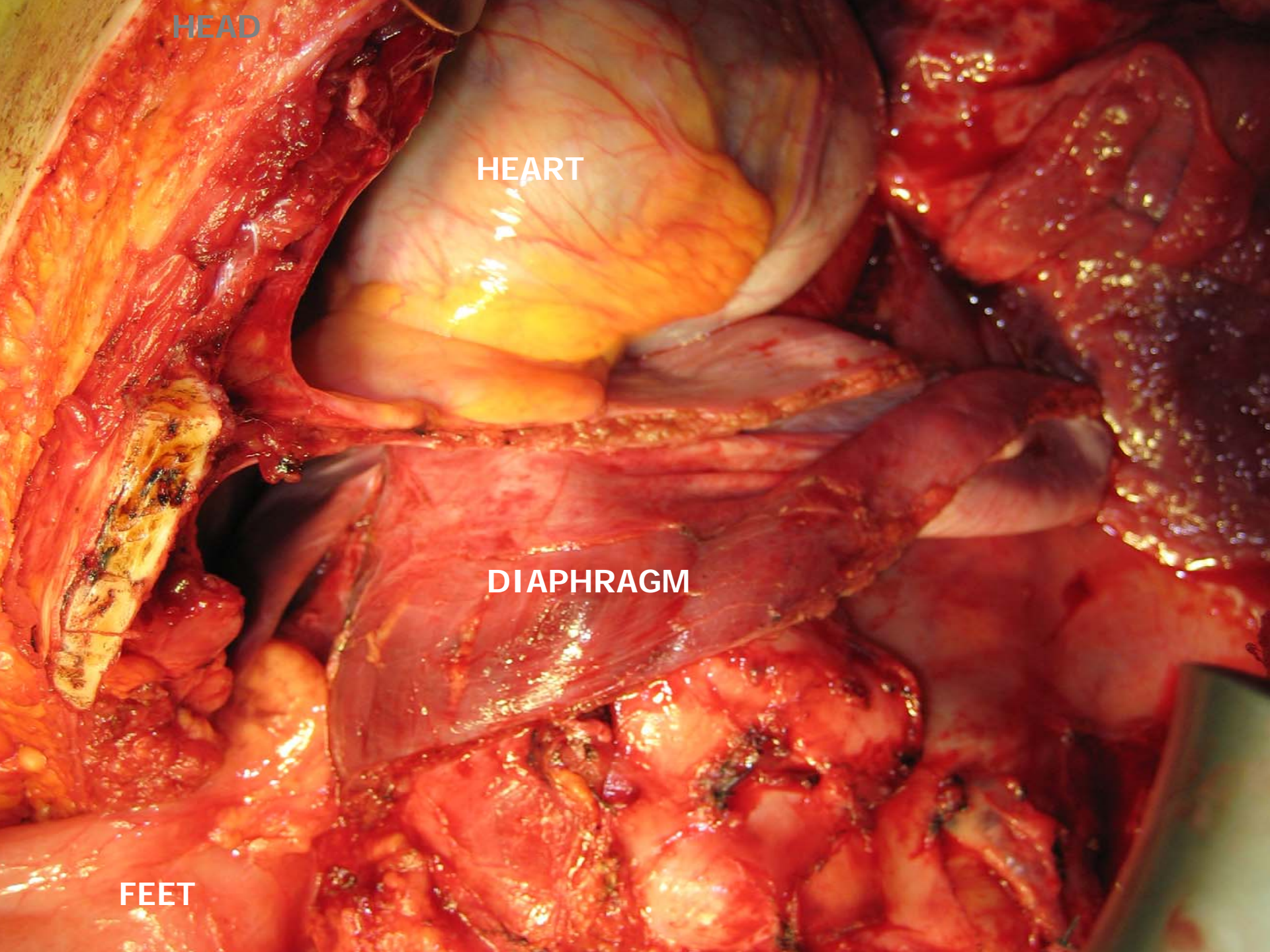


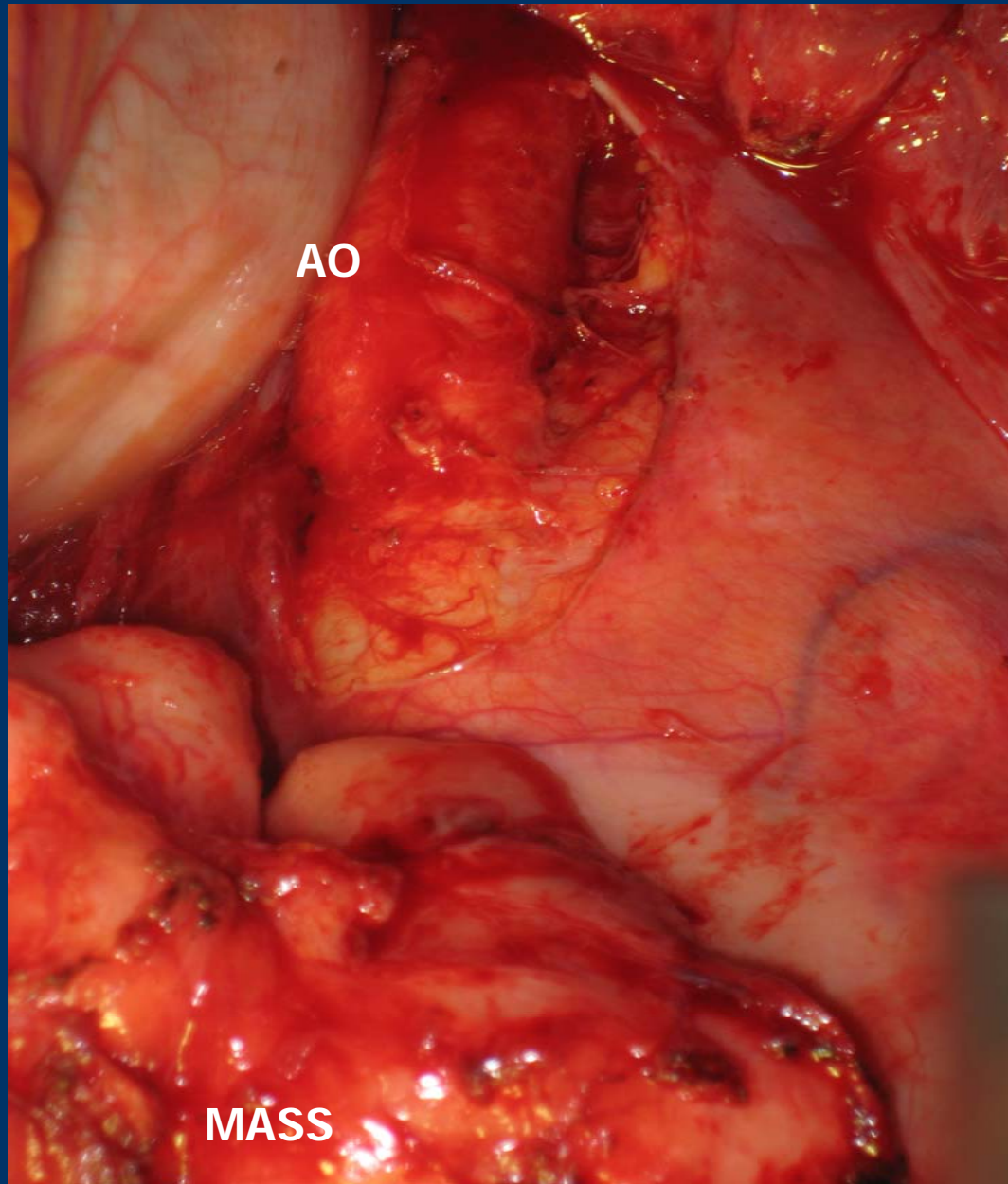
HEAD

HEART

DIAPHRAGM

FEET

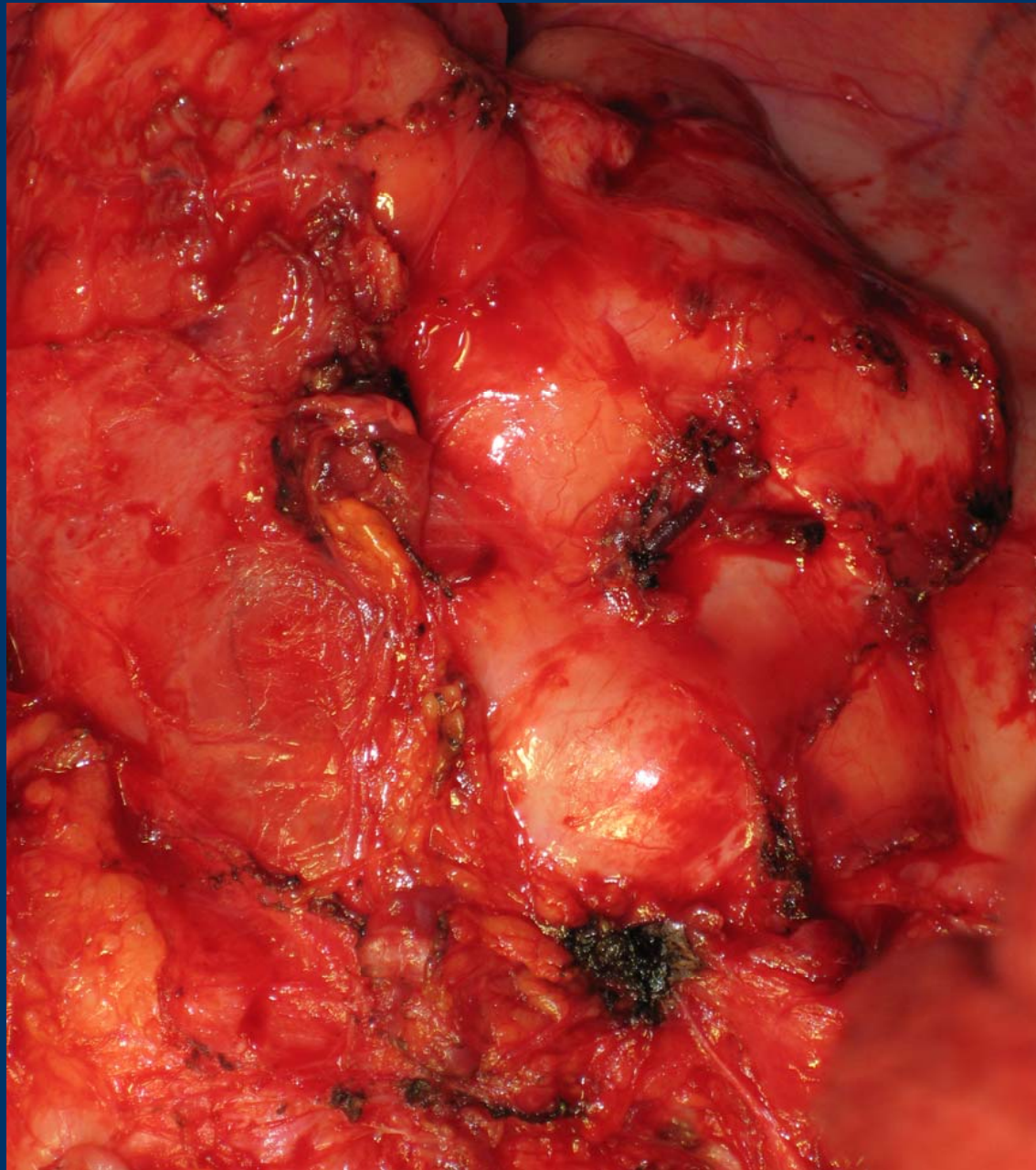


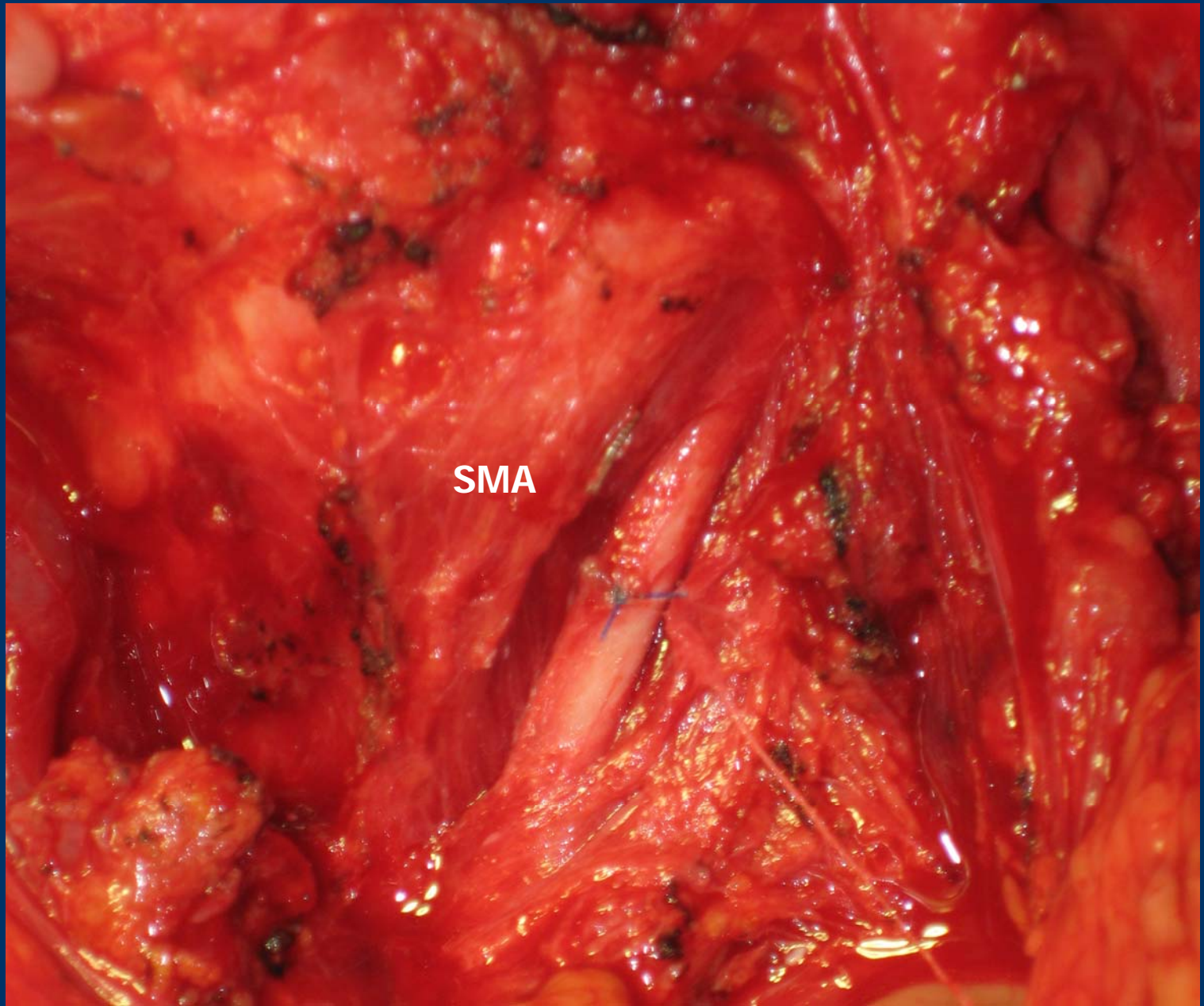


AO

MASS

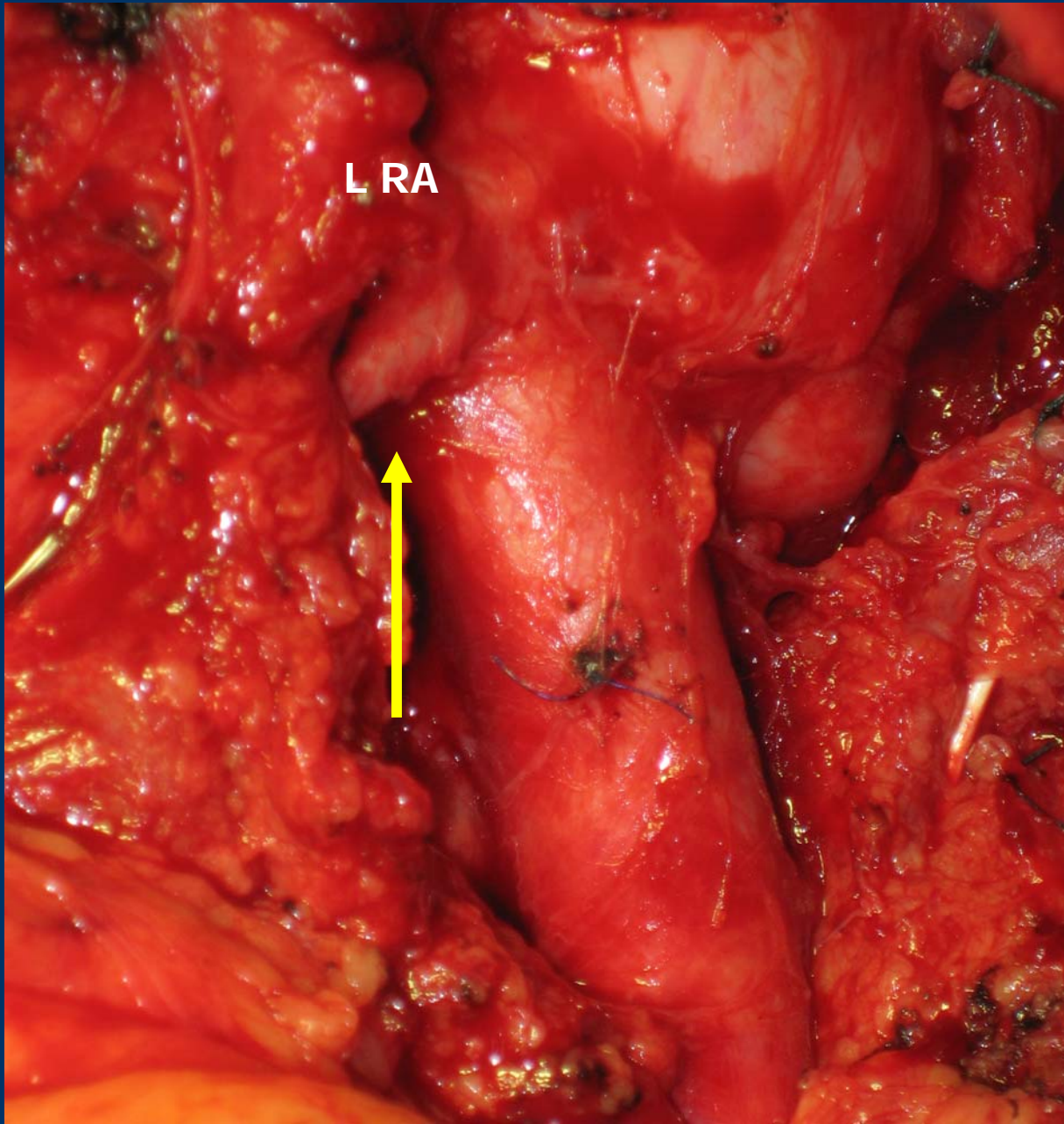






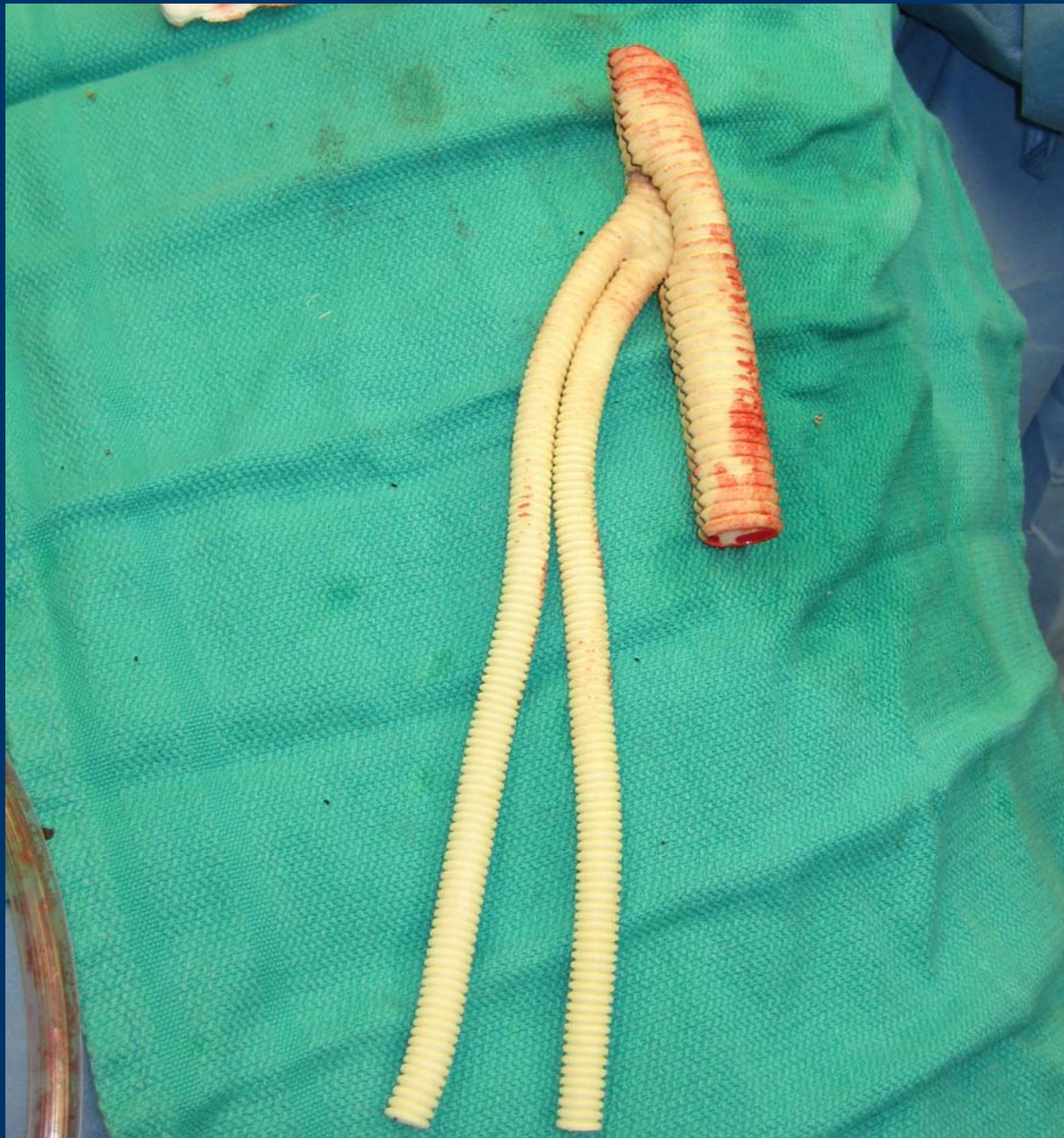
SMA

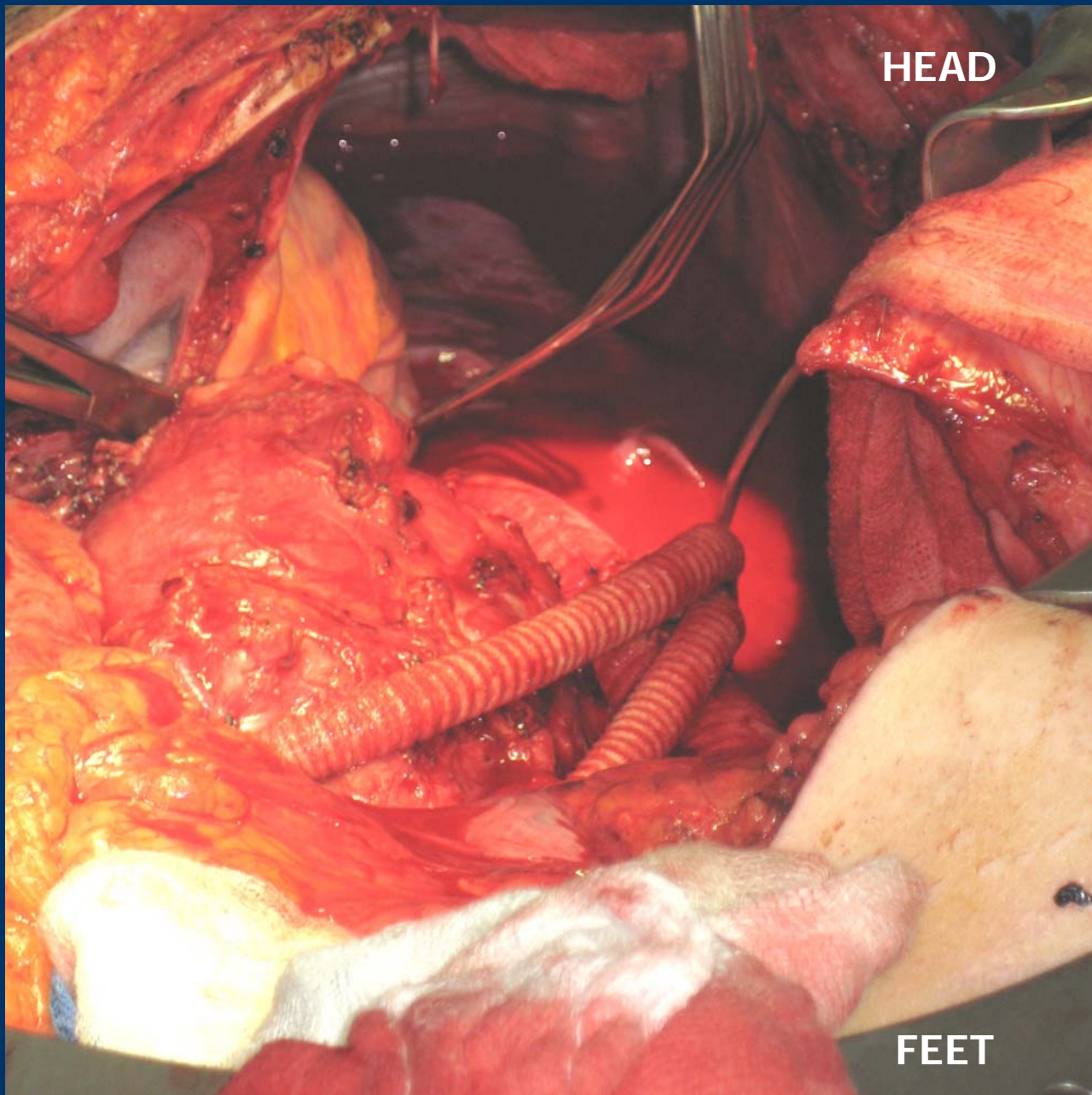




L RA



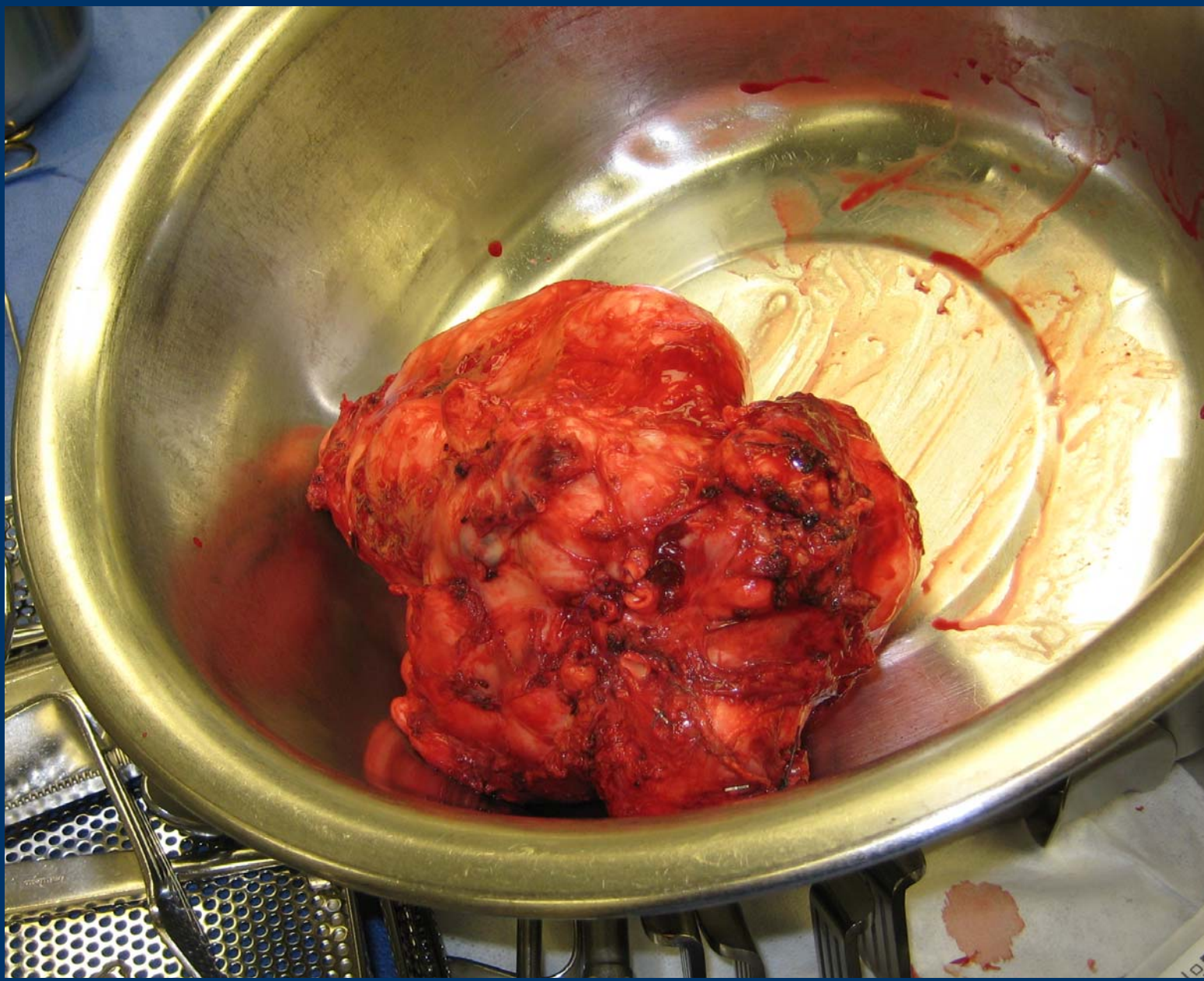




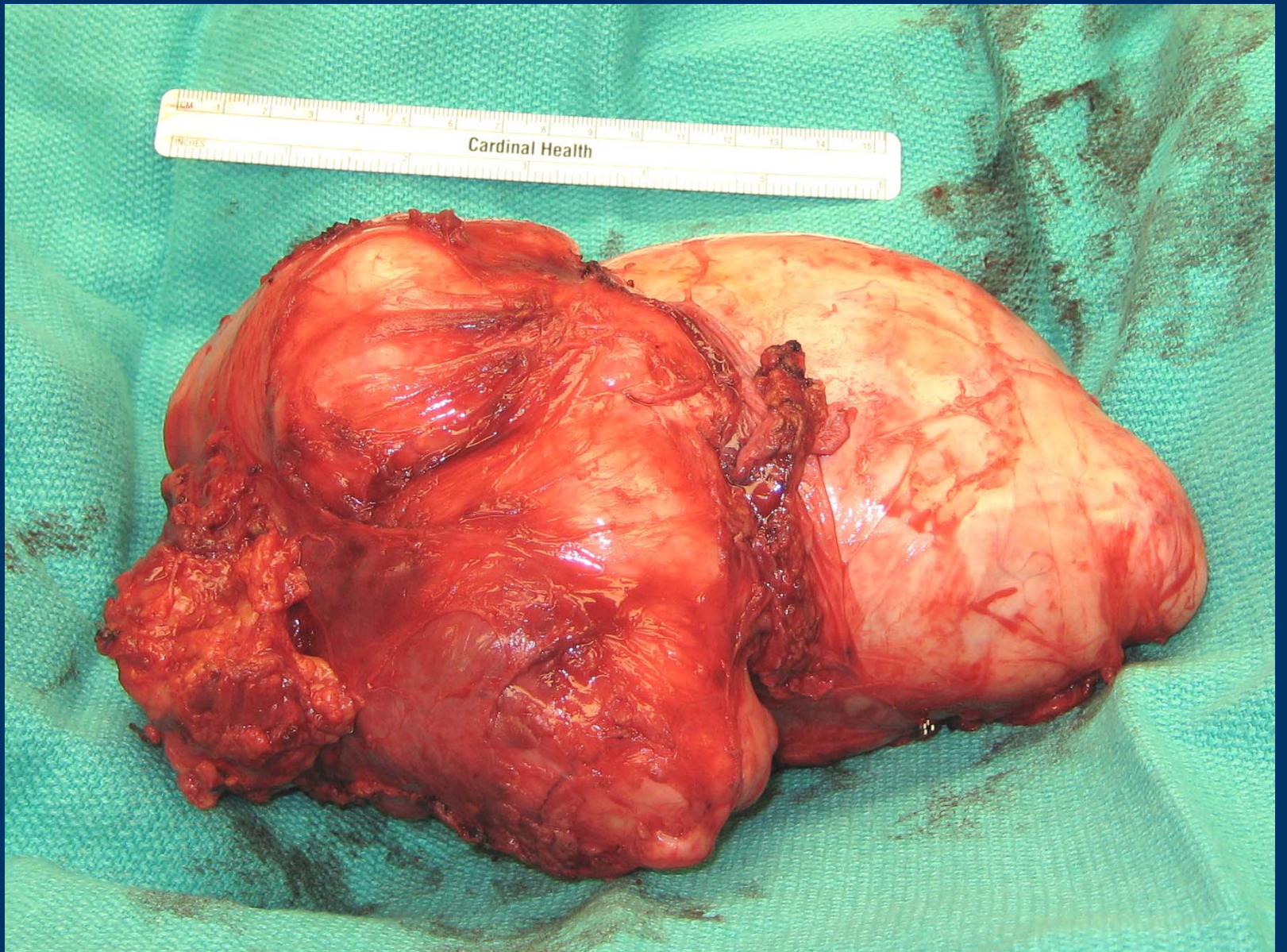
HEAD

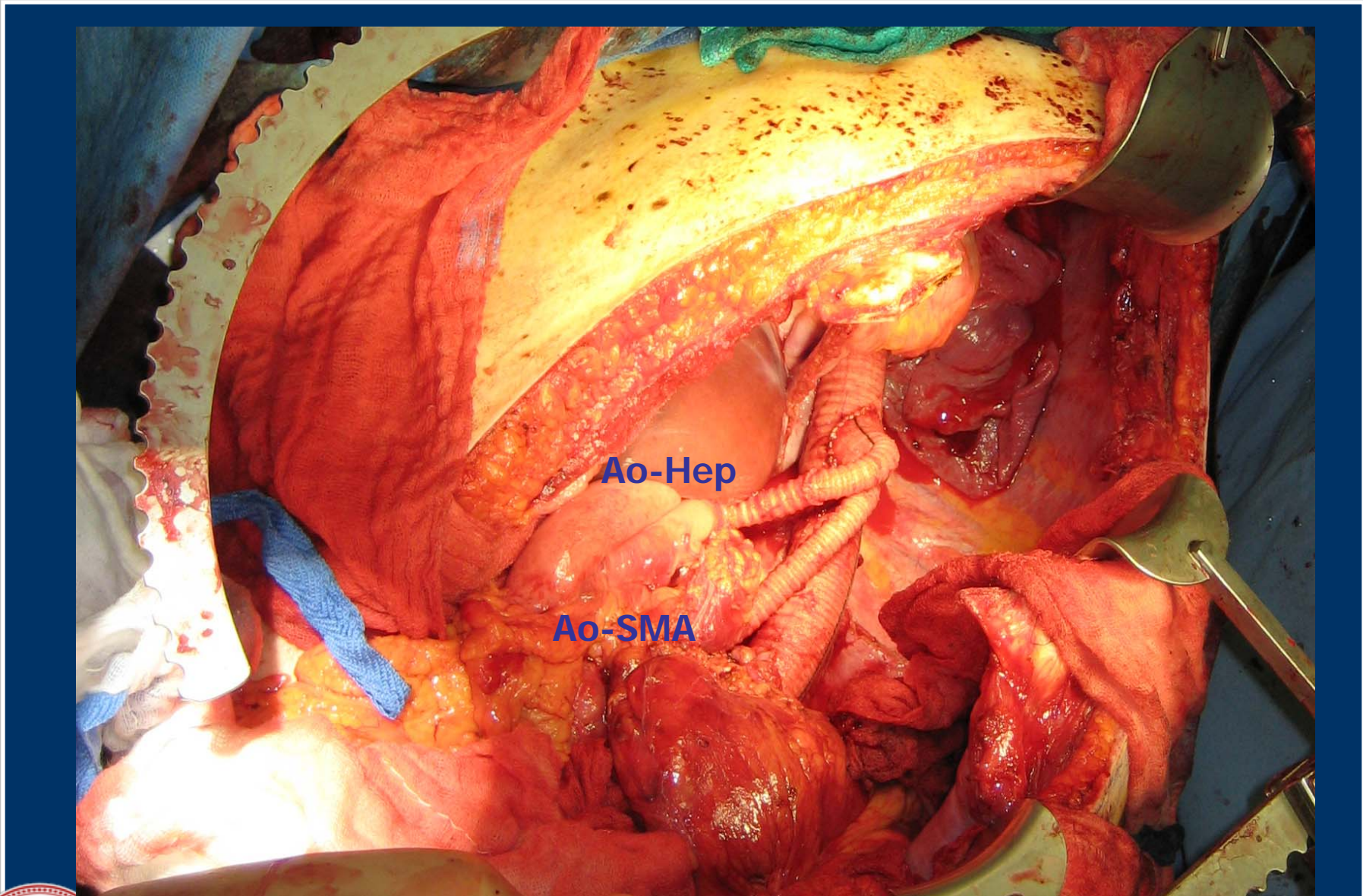
FEET







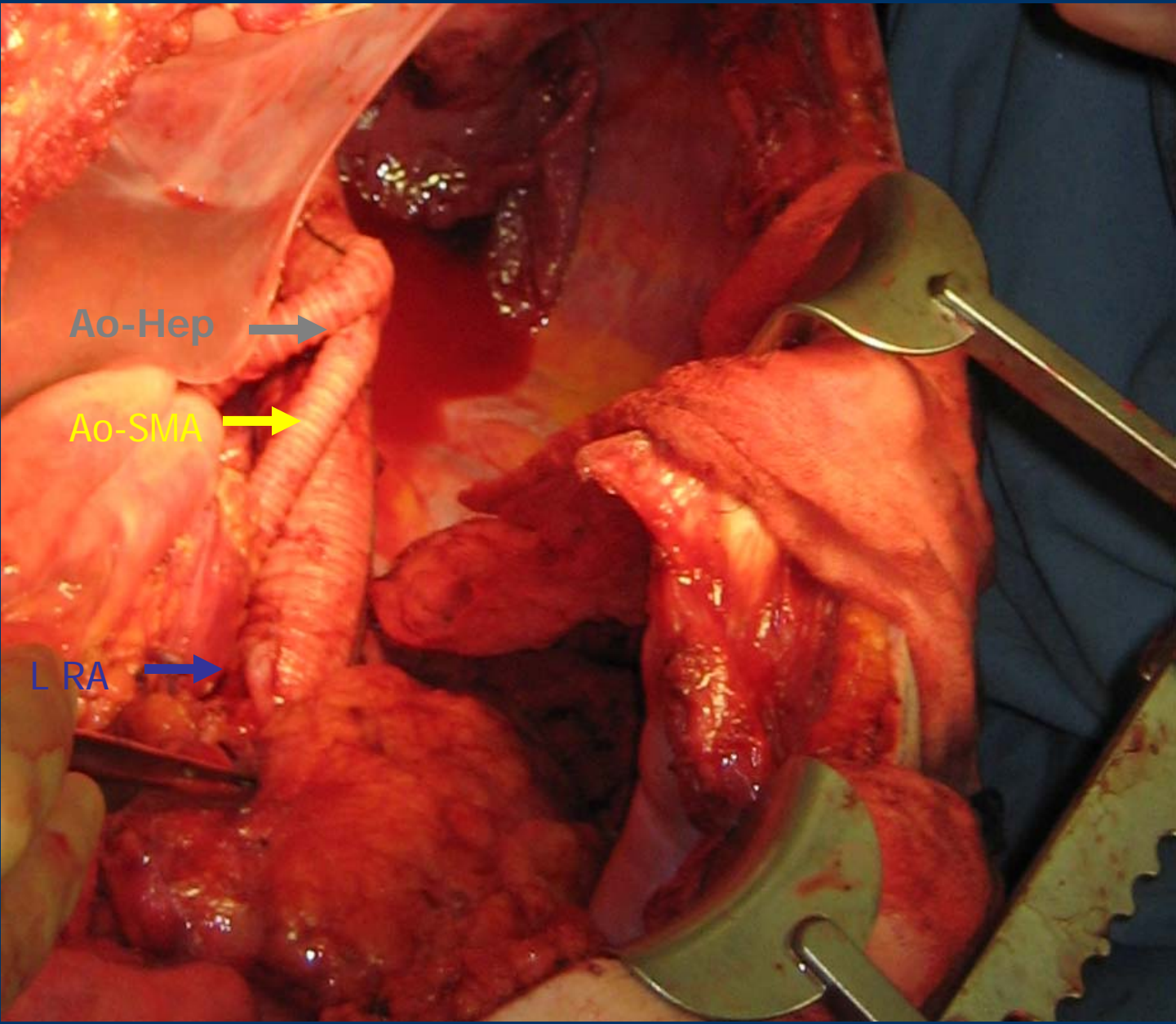




Ao-Hep

Ao-SMA





Ao-Hep

Ao-SMA

L RA



# Pathology:

Fibromyxoid sarcoma, Grade I (low grade), no LVI, tumor present at margin, 0/1 LN

TNM: pT2b pNx Mx

(High recurrence rate, low metastasis potential)

