

HPI

86 yo male s/p EVAR (Talent R main 36x16x175, L 14x16x105, proximal aortic cuff 36x36, R distal extension 18x16x55) of a 8.4 cm AAA . Had a type I endoleak with increasing AAA size to 9.5 cm and was treated with a Zenith Renu 36x50 aortic cuff.



HPI

Presents with abd pain x 1 month worse over the past week. CT Angiogram with 11.5 cm AAA. Transferred for possible ruptured AAA.

Exam: Nonpalpable R femoral pulse,
Palpable L femoral pulse. Doppler signals present distally.



PMHx /PSHx

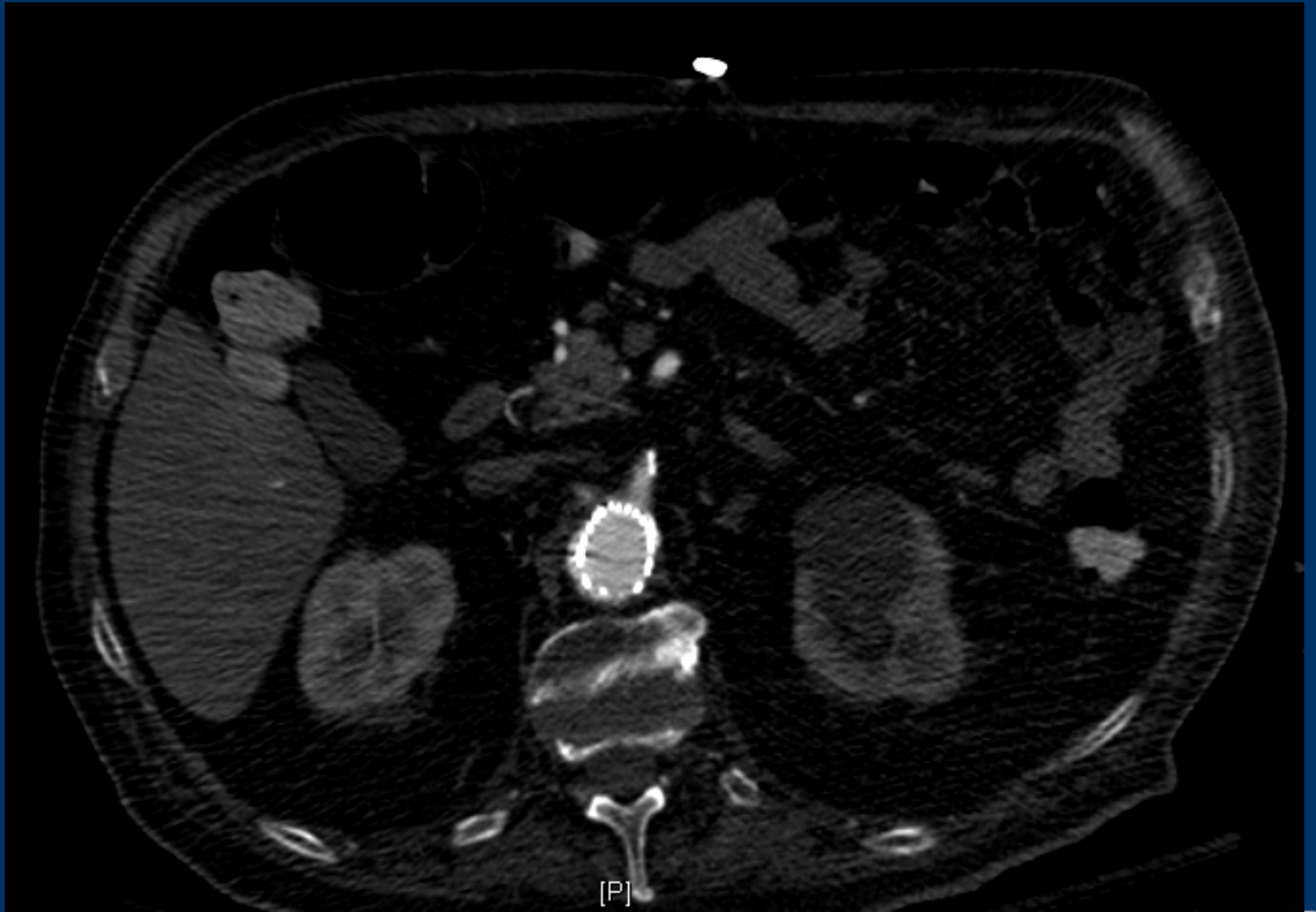
- R CVA with L hemiplegia
- DM
- HTN
- Hyperlipidemia
- CRI (Creat 1.3-1.5)
- Obesity
- S/p EVAR of AAA 2006
- S/p Zenith Renu aortic cuff 2007



Operation :

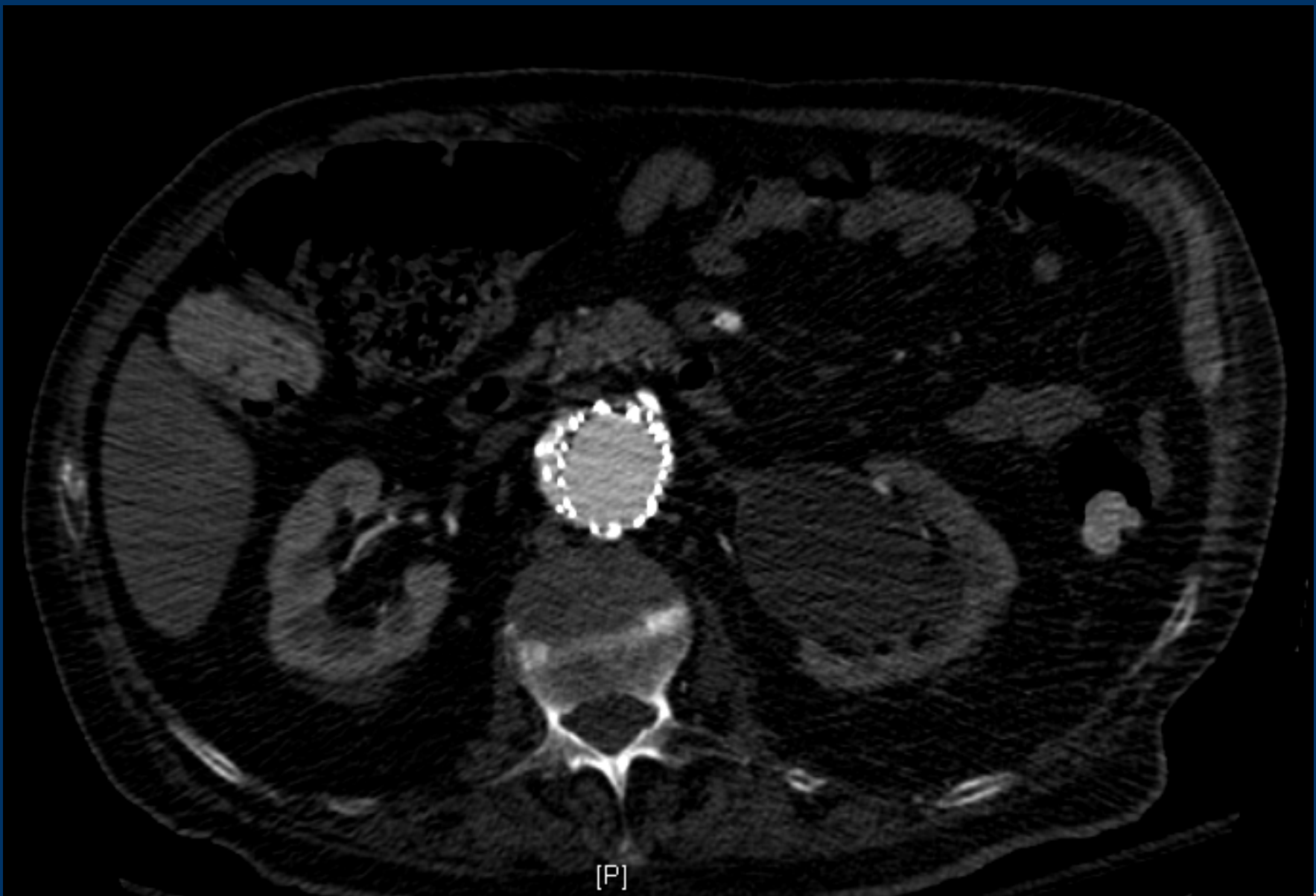
Open AAA repair after failed EVAR,
Aortic occlusion balloon





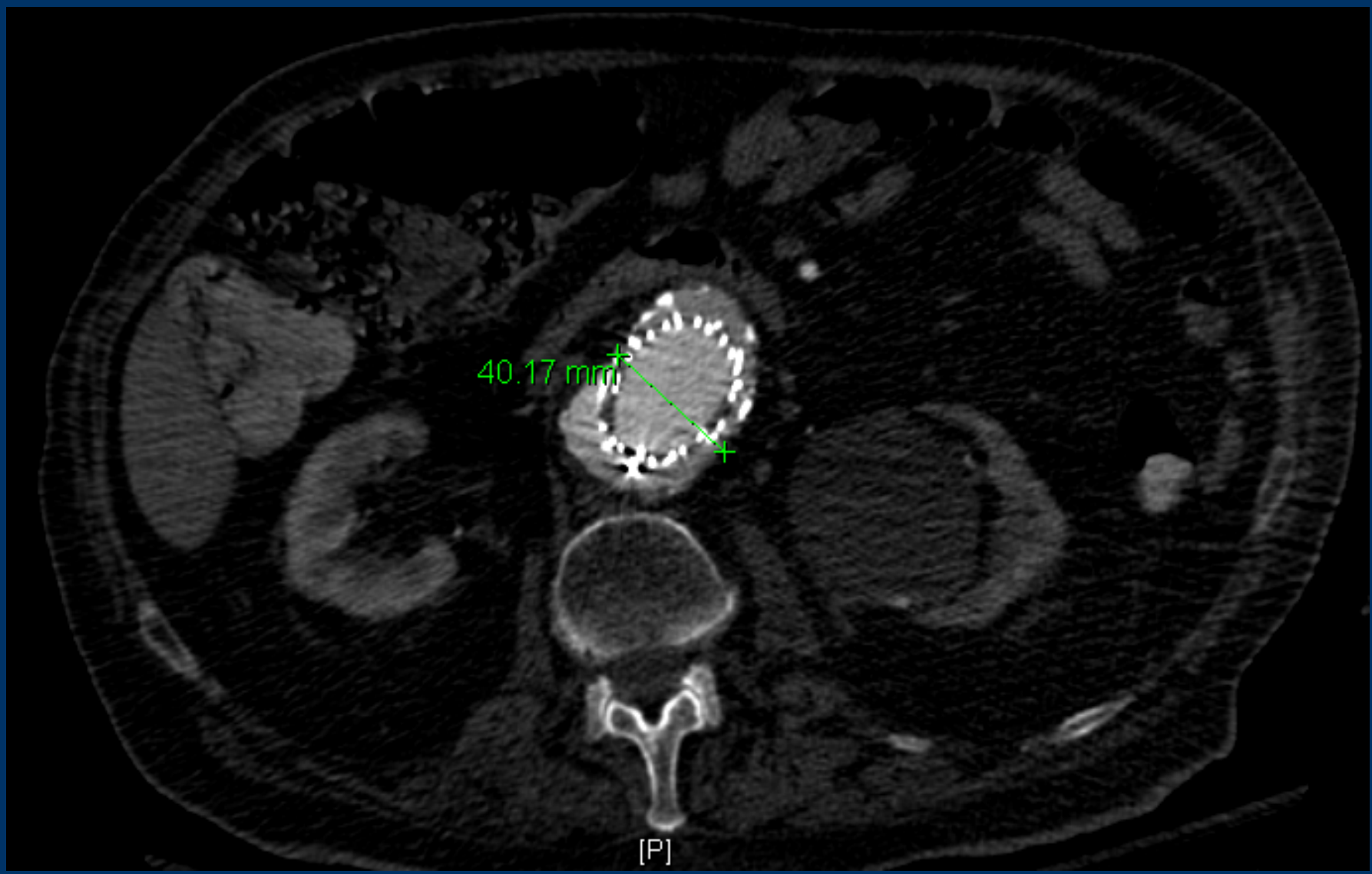


[P]



[F]





[P]





[P]

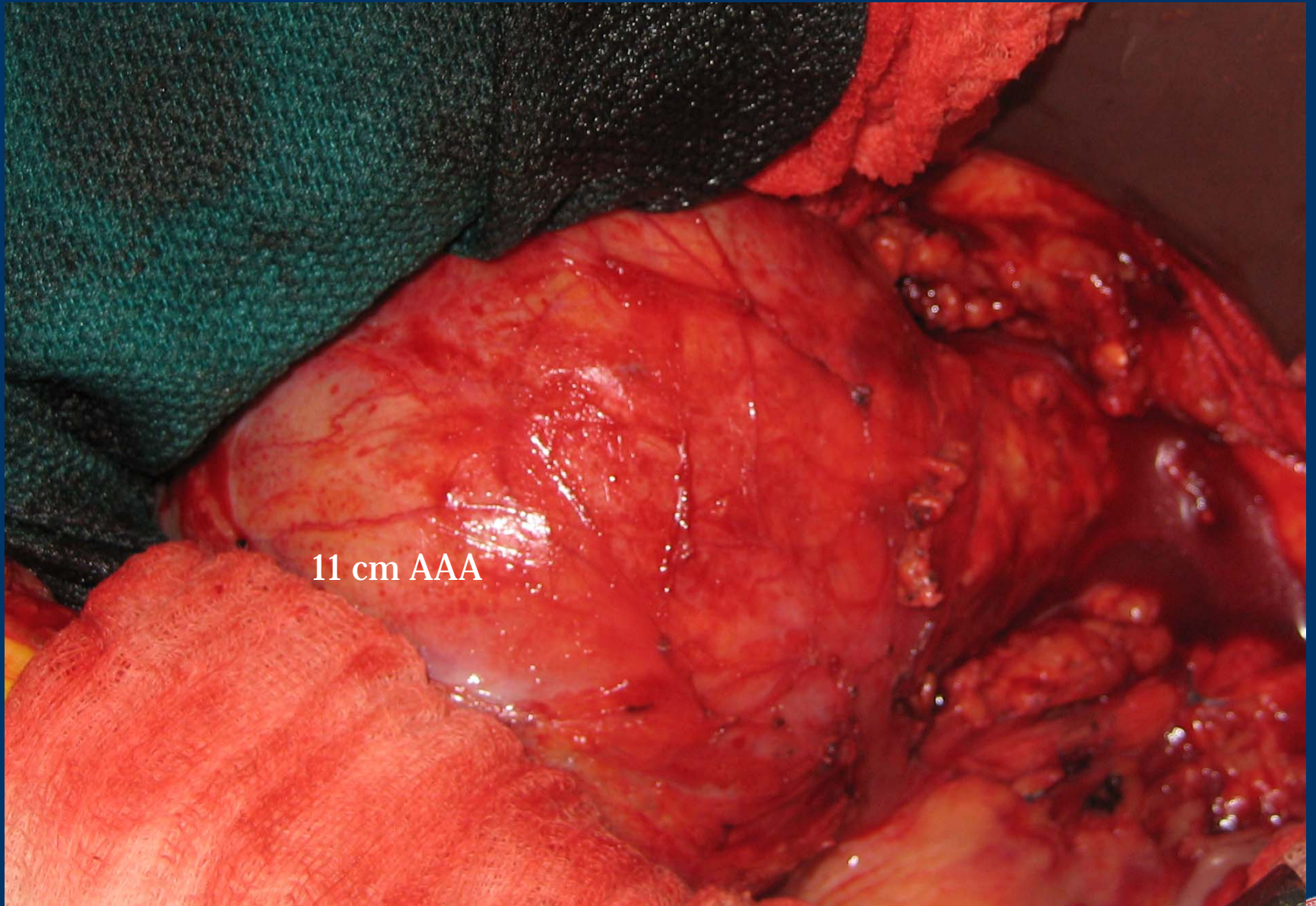




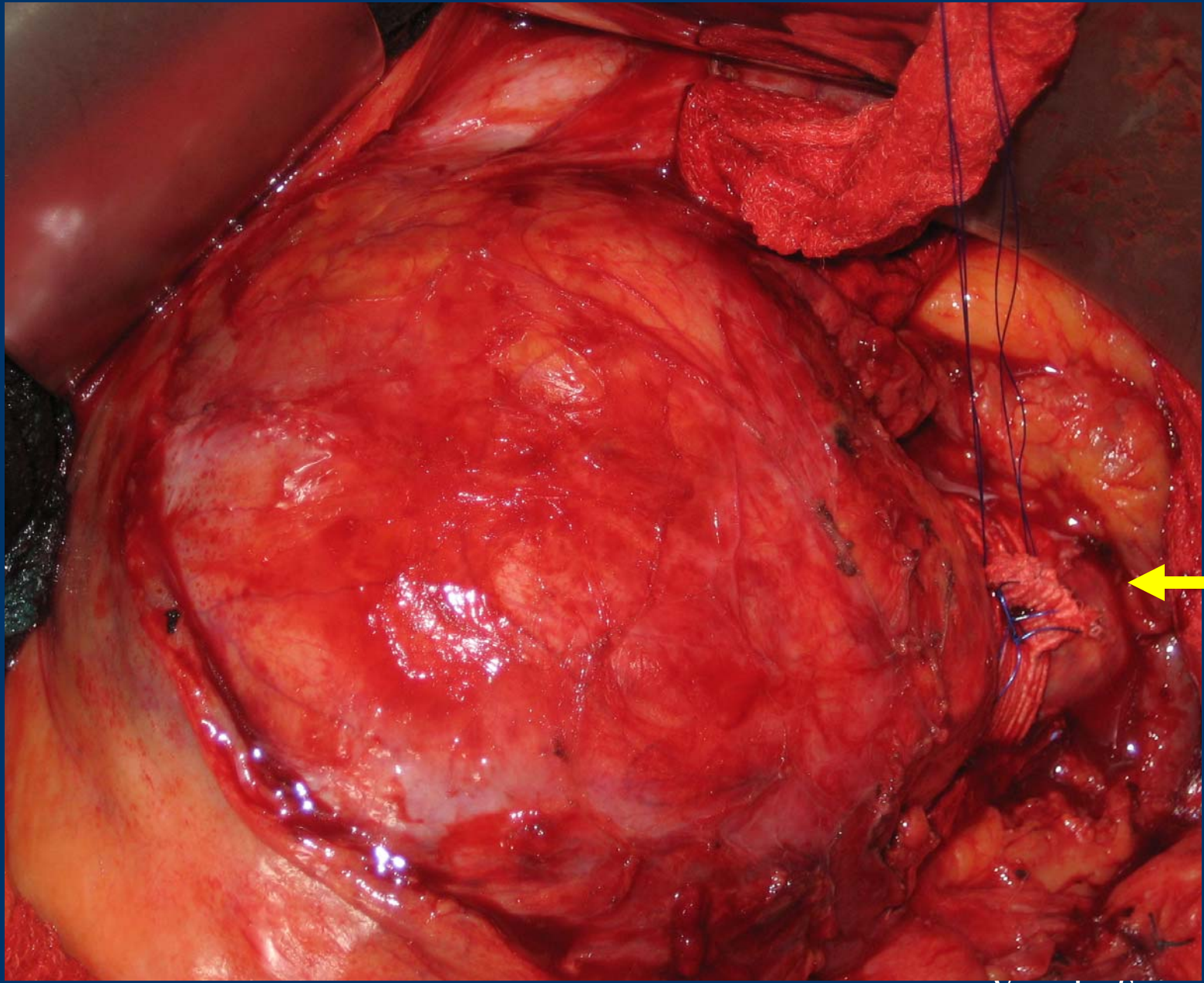
[P]



[P]

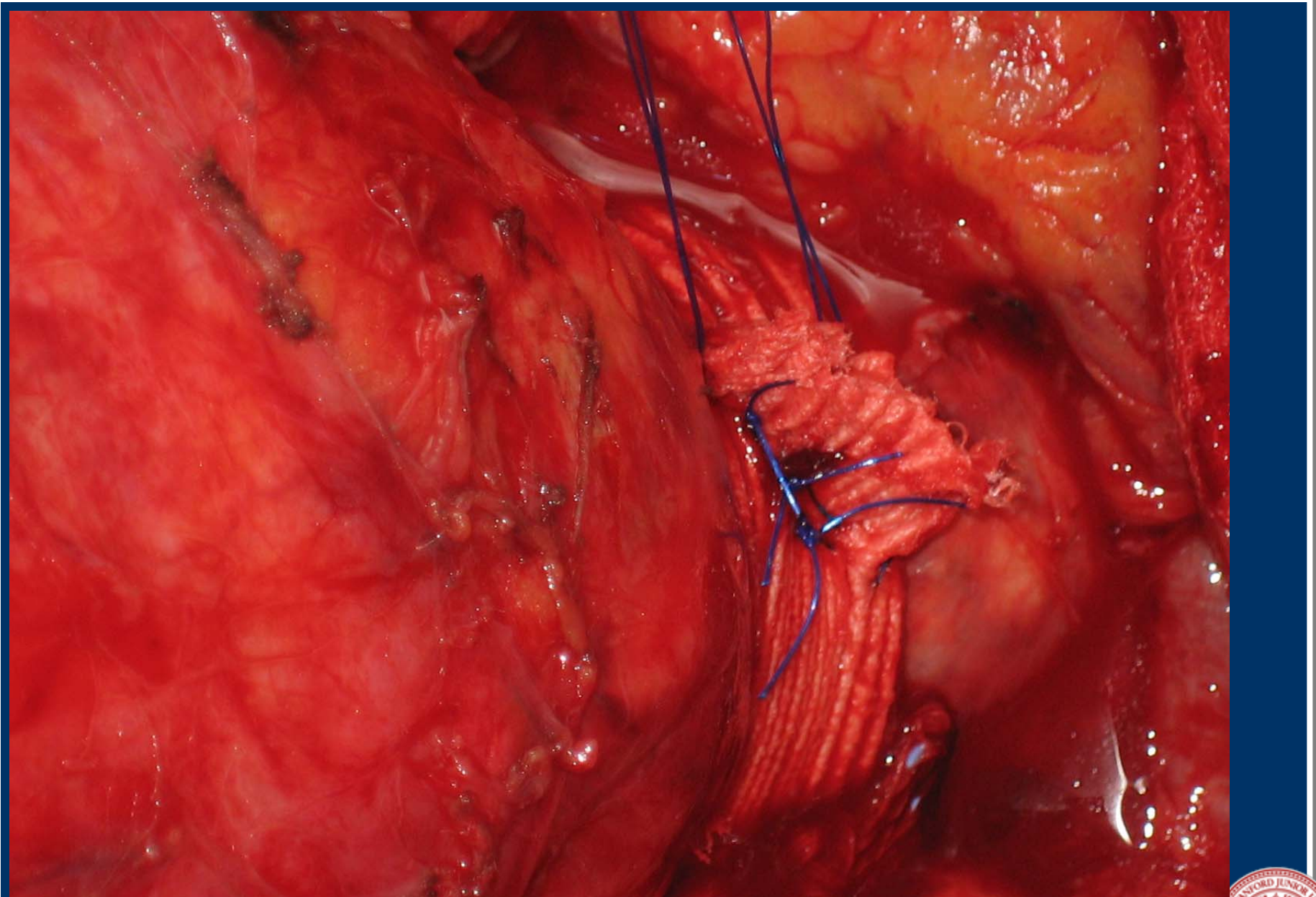


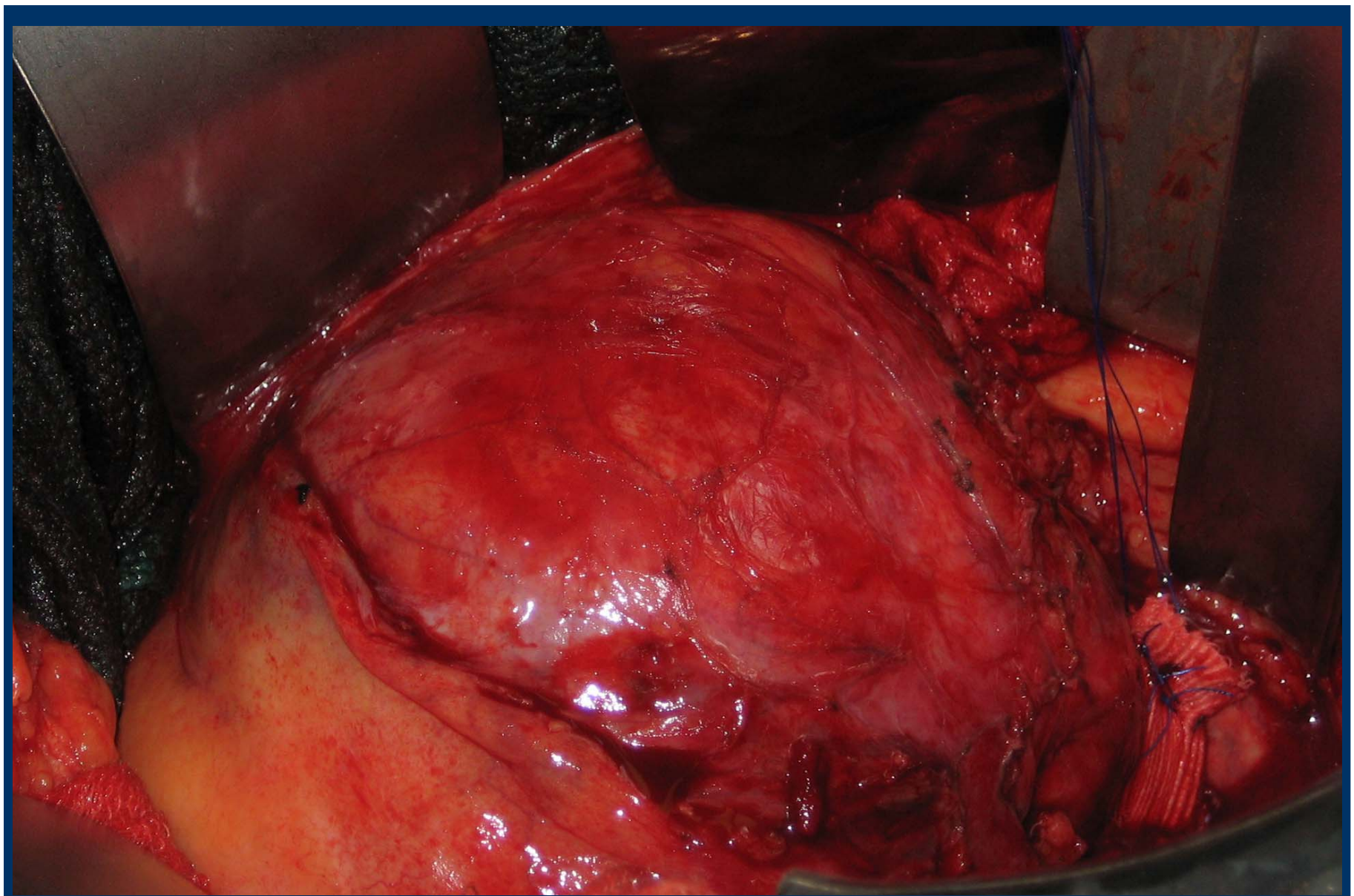
11 cm AAA

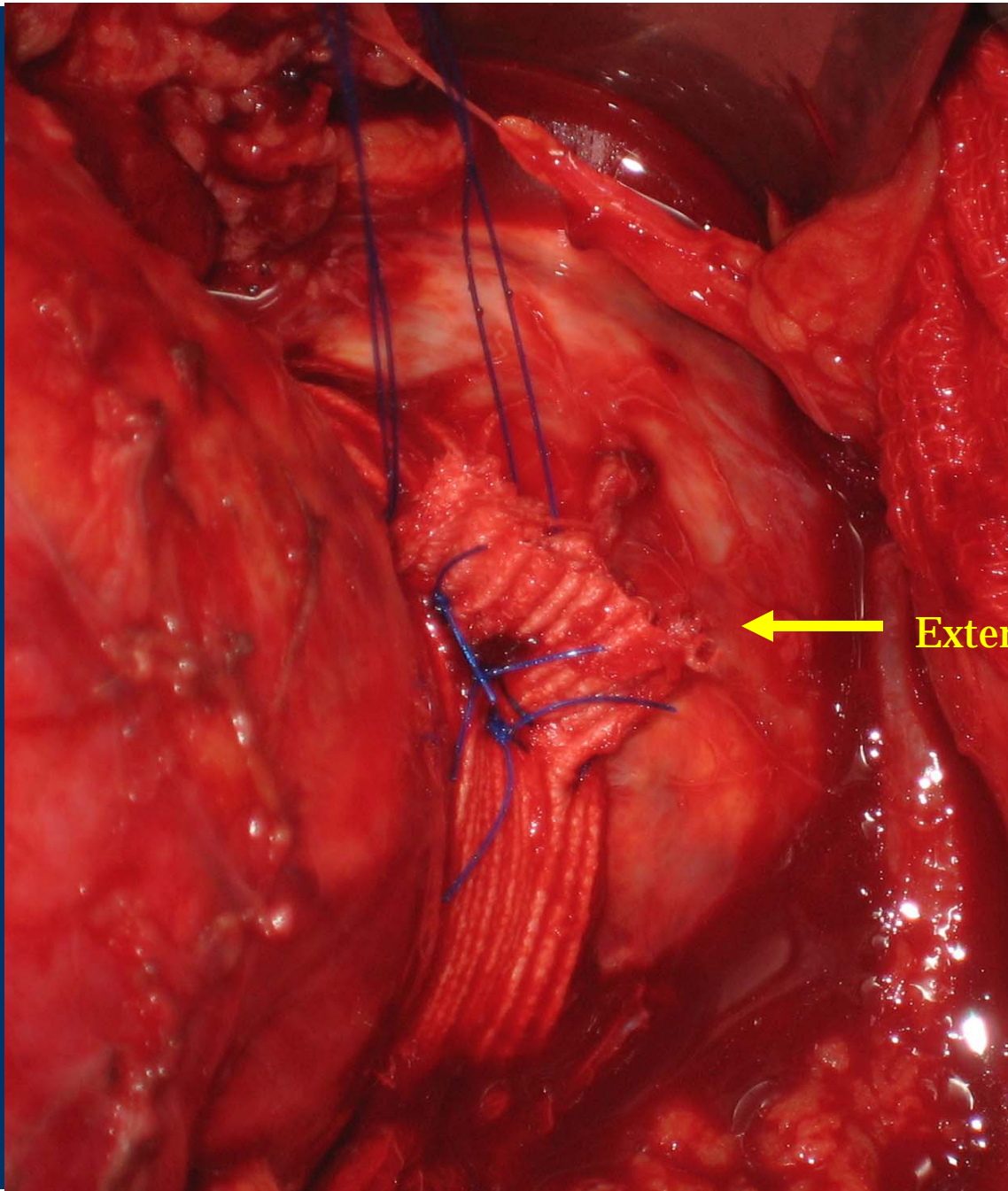


Vascular Surgery



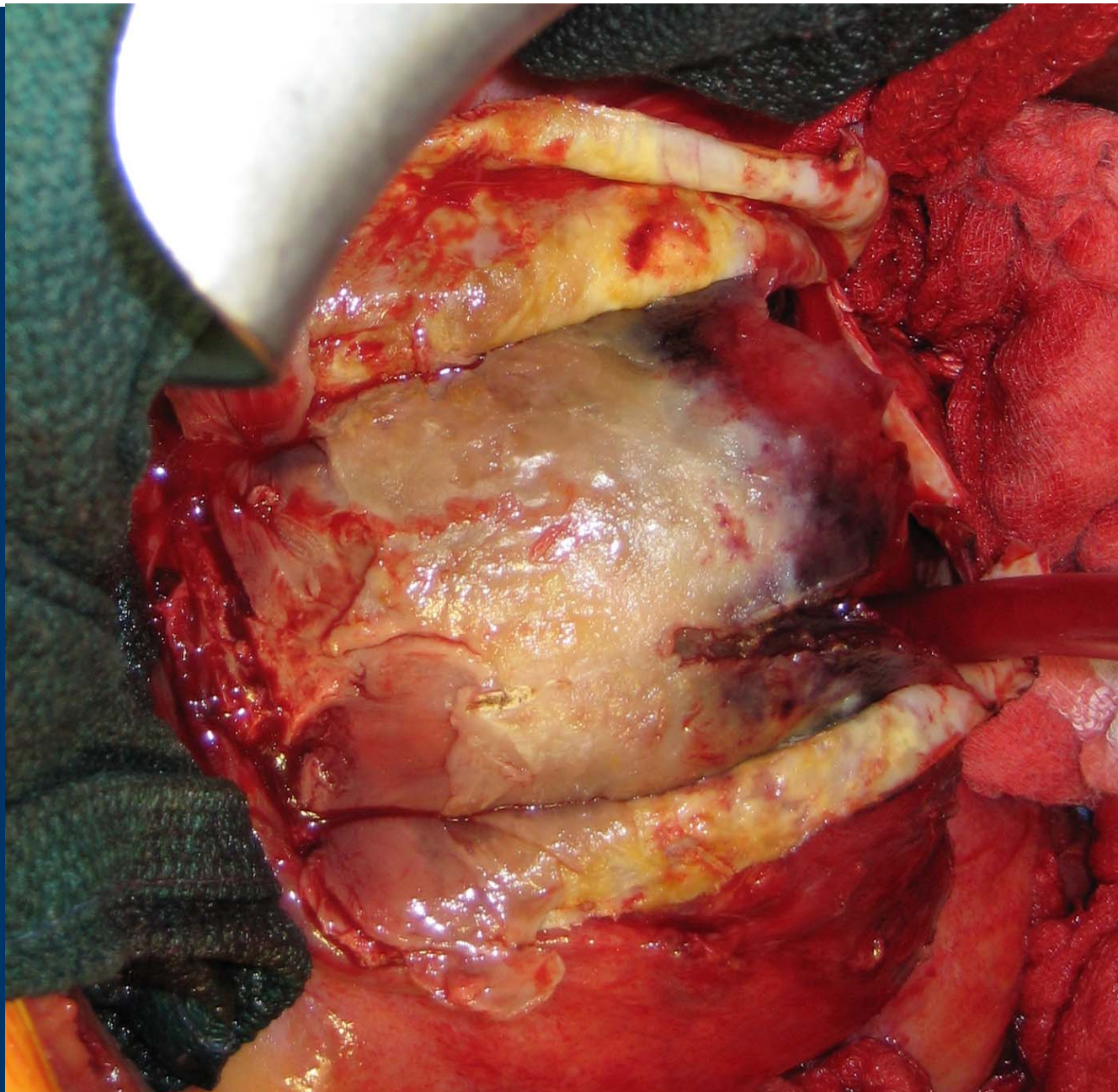






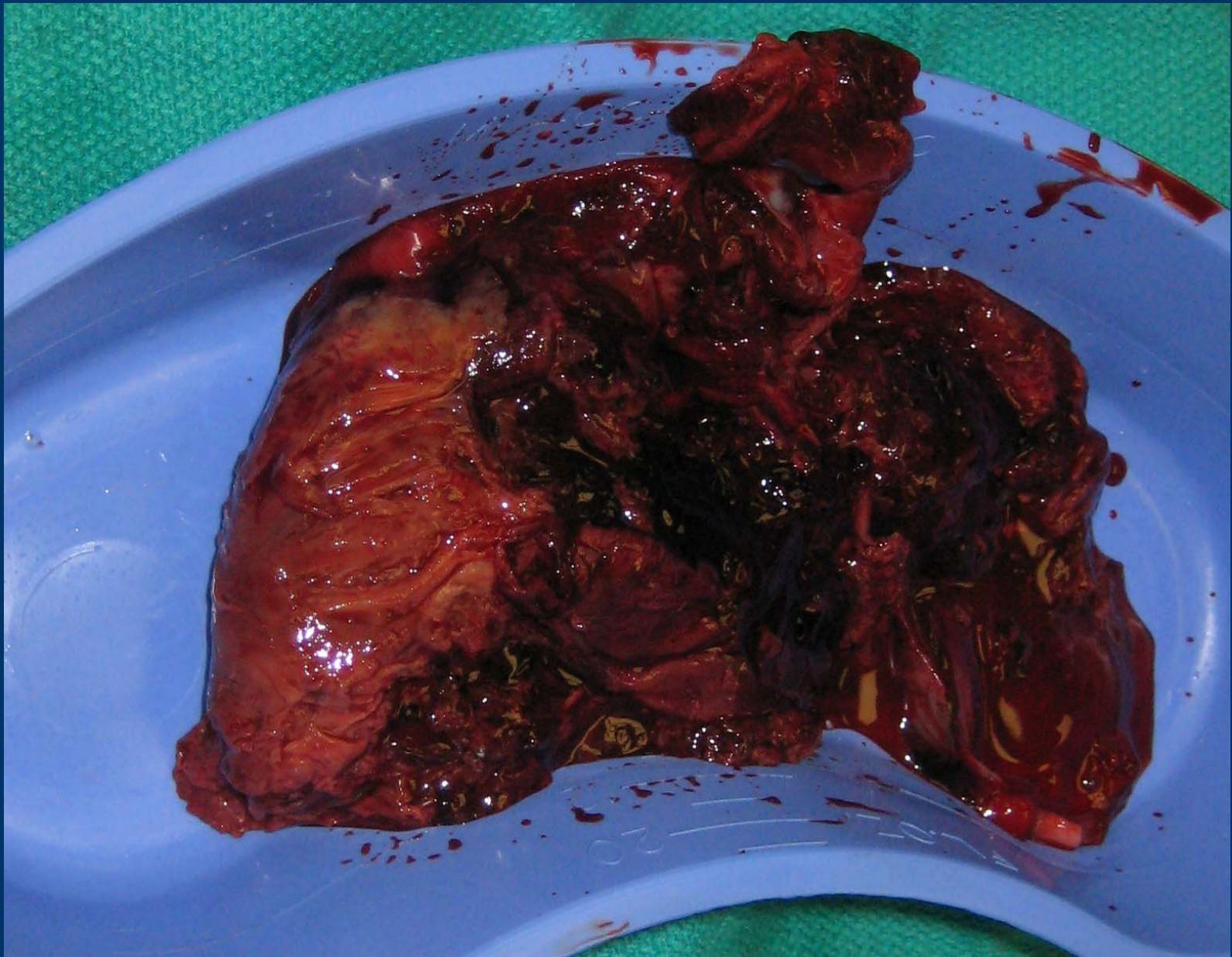
External wrap





Vascular Surgery





Vascular Surgery





TALENT Endograft

An intraoperative photograph showing a TALENT Endograft in a surgical field. The endograft is a long, cylindrical, reddish-brown mesh-like structure with a central lumen, positioned within a blood-filled cavity. It is held in place by several blue surgical sutures. The surrounding tissue is highly vascularized and appears moist and glistening. The text "TALENT Endograft" is overlaid in white on the left side of the image.

TALENT Endograft

An intraoperative photograph showing a surgical procedure for aneurysmorrhaphy. The image displays a large, reddish, lobulated aneurysm being repaired. The surgical field is saturated with red, indicating exposed muscle and soft tissue. Several blue sutures are visible, used for securing the repair. The overall scene is brightly lit, highlighting the texture and color of the surgical site.

Aneurysmorrhaphy

