

# HPI

75 yo male otherwise healthy playing tennis.  
Ran into the boards with outstretched hand. C/o shoulder pain/swelling.  
Brought to the ER with a pulseless RUE.  
Numb and unable to move the hand. No doppler signals.



# PMHx

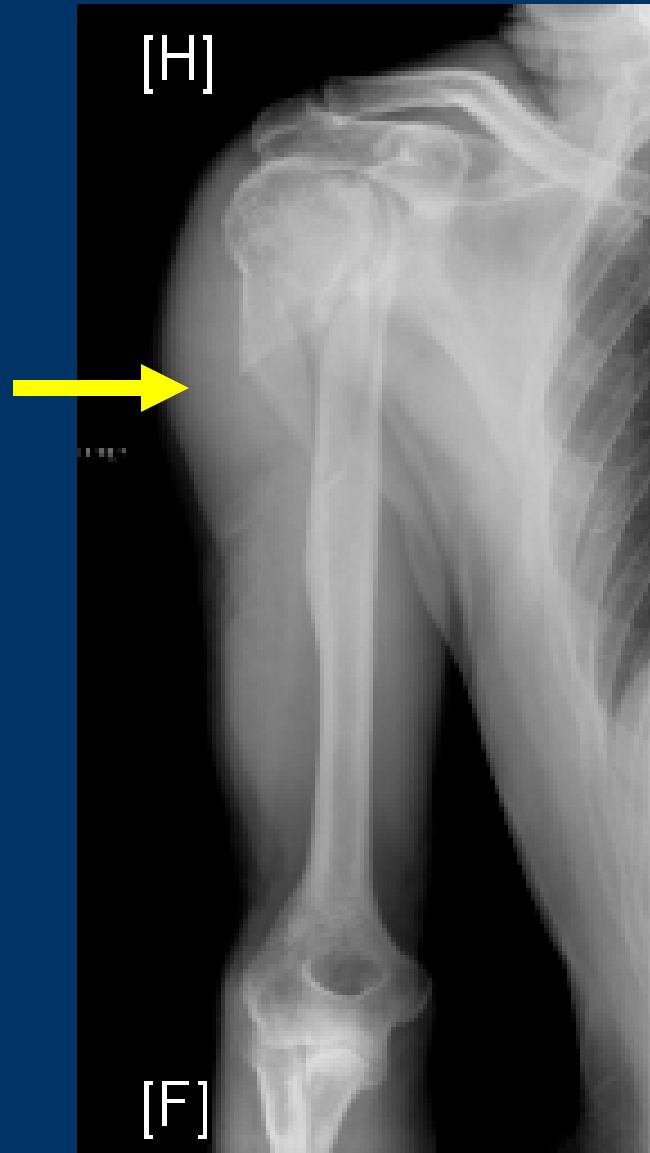
- Hypothyroidism on synthroid

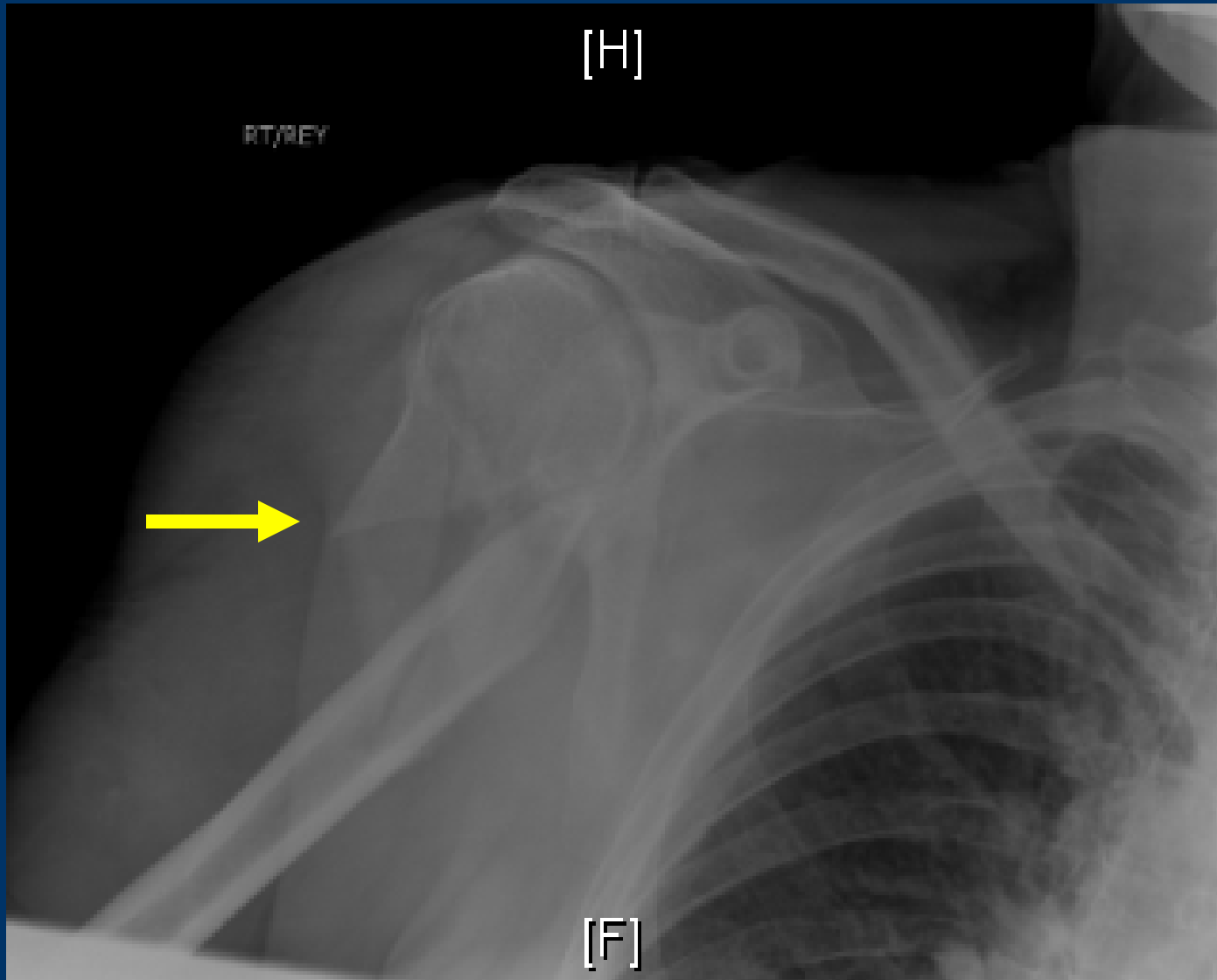


# HPI

- Reduced at bedside by Ortho PAMF
- Return of sensation and motor
- At times, diminished pulses are present related to position of the arm
- Hand was pink , CR<2 sec, O2 sat 96%









# Operation

ORIF humerus fx

RUE Angiogram

Right axillary-brachial artery bypass  
(SVG)

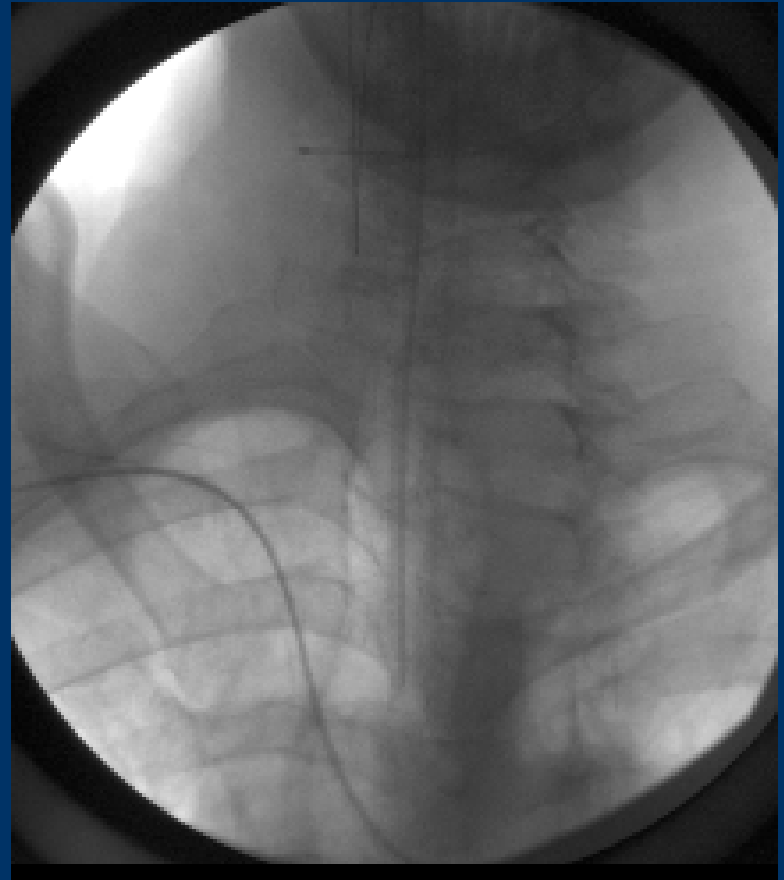


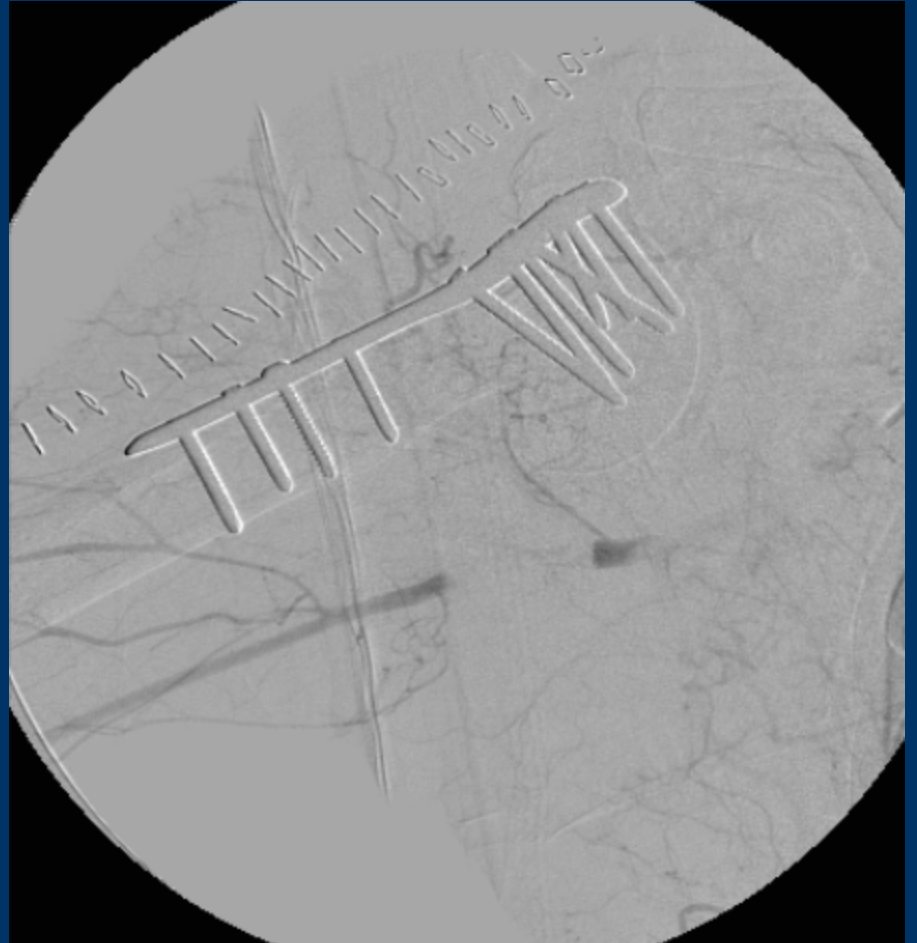


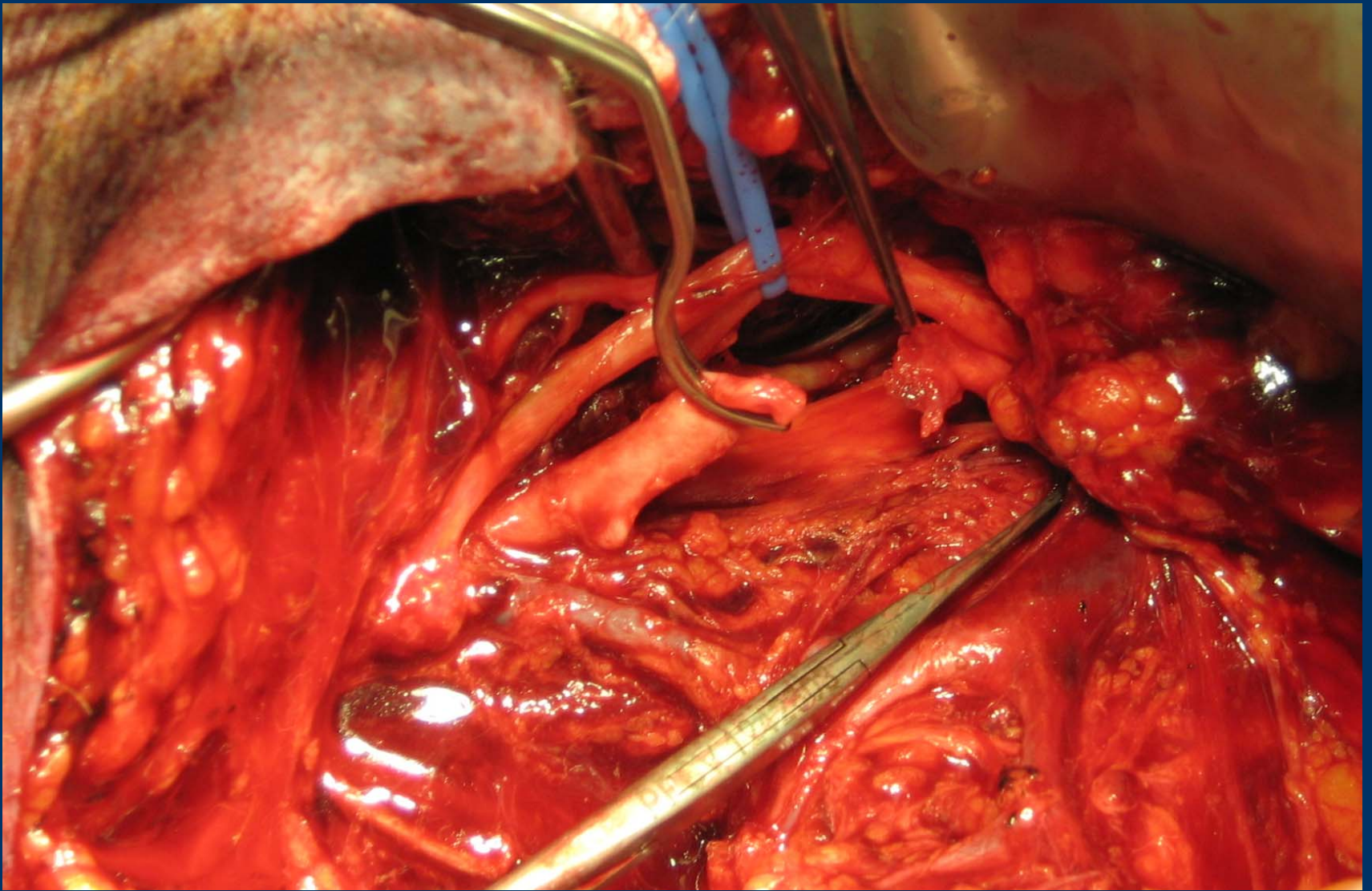
Vascular Surgery



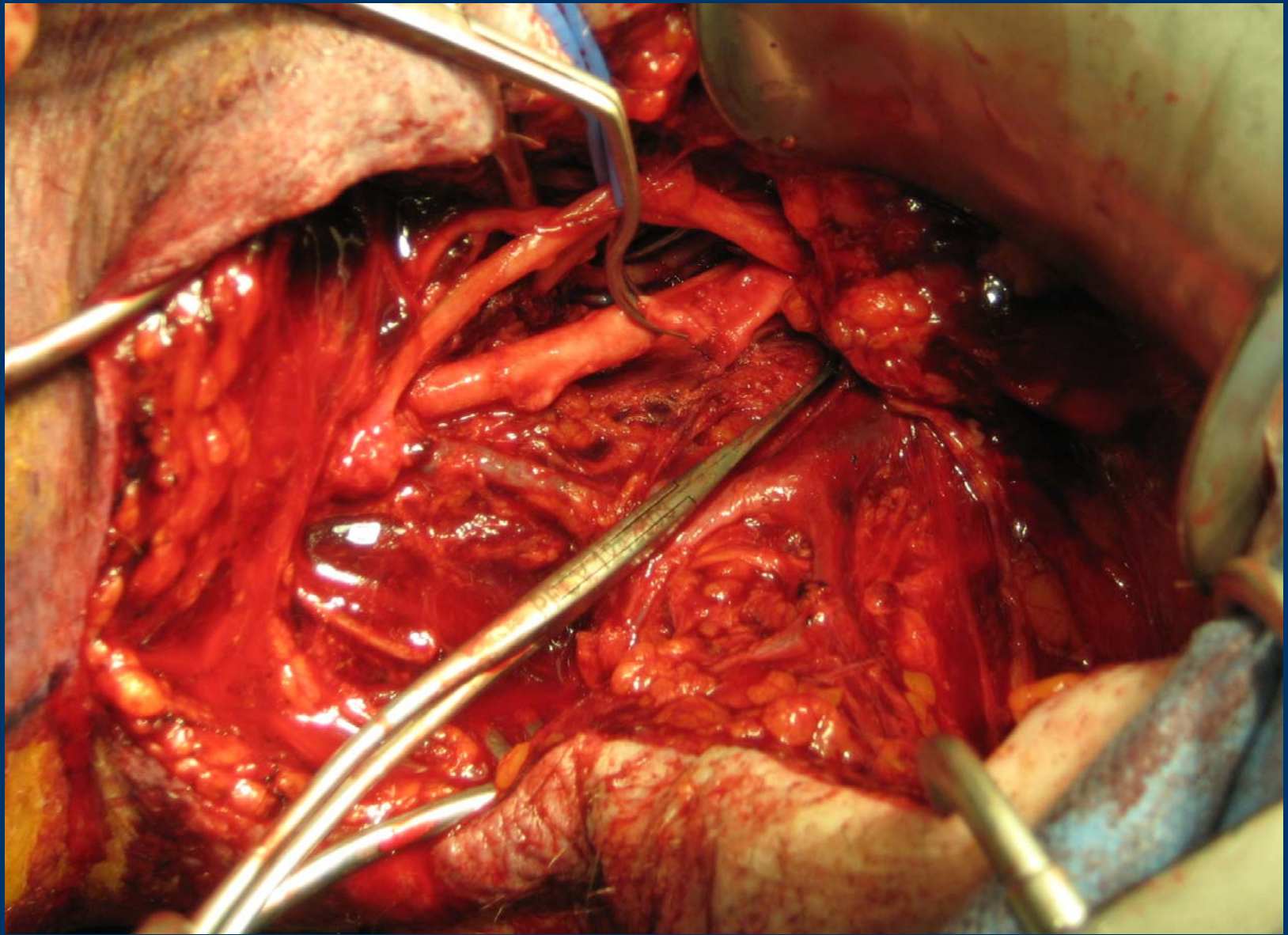




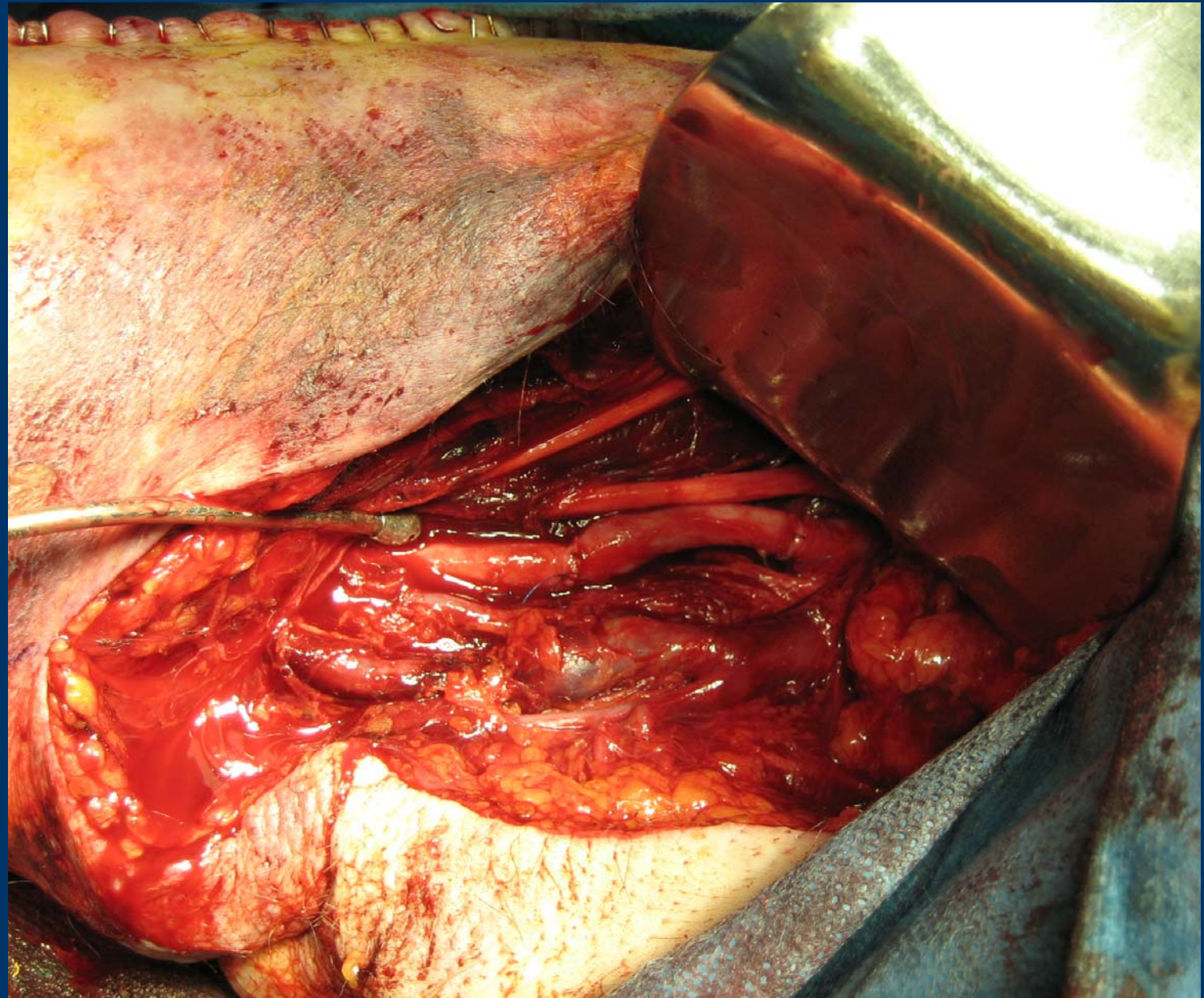








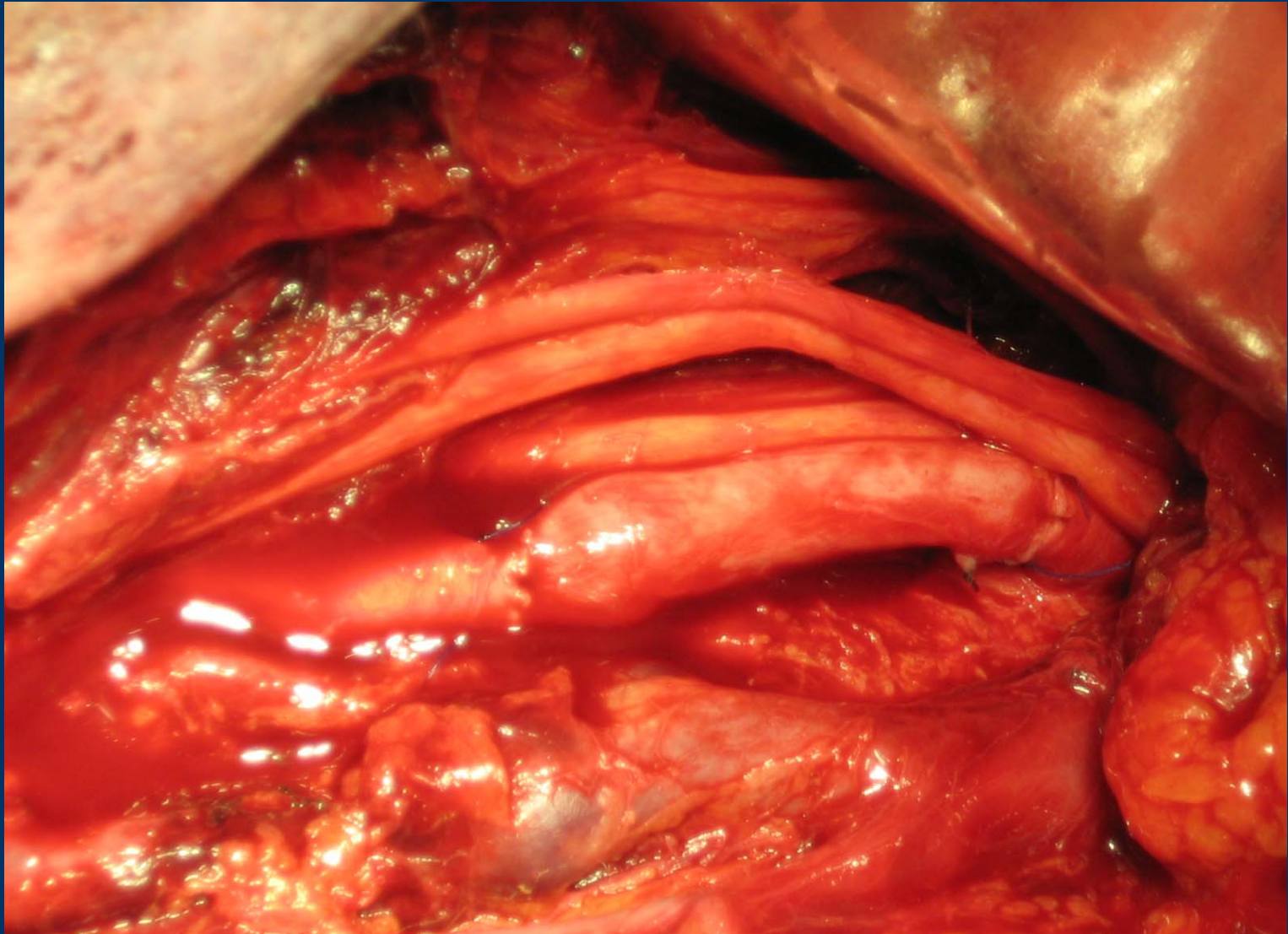




Vascular Surgery







# Hospital course

- POD#0 Transferred to the floor
- Placed in a shoulder immobilizer by Ortho PAMF
- Discharged on POD#1 with palpable pulses in the RUE and motor/sensation intact.

